

WILTSHIRE ARCHAEOLOGICAL AND NATURAL HISTORY SOCIETY

(Company Limited by Guarantee)



SUMMARY and OBJECTS

The Wiltshire Archaeological and Natural History Society (the Society, aka WANHS – pronounced ‘wans’) was founded in 1853. The Society’s first permanent Museum opened in Long Street in 1874.

The Society is a registered charity and governed by Articles of Association (available on request). Its objects are ‘to explore the archaeology, art, history and natural history of Wiltshire’. To achieve these aims we run the Wiltshire Museum, organise a programme of conferences, lecture and events, run a learning and outreach programme for children and schools, provide access to our objects, library and archive collections for academic and general researchers, review planning consents, support the Wiltshire Archaeology Field Group, promote Industrial Archaeology and publish the *Wiltshire Archaeological and Natural History Magazine* (WANHM). Further details are provided elsewhere in this Annual Report.

The collections have been acquired over the past century and a half and their strength lies in the prehistoric material. The Early Bronze Age collection is of exceptional importance because of its size and range, the uniqueness of many of the objects, the fact that it includes many important items, its association with the World Heritage Site of Avebury and Stonehenge, and its relevance to the history of archaeology. It has now been redisplayed enabling the ‘Gold from the Time of Stonehenge’ to be put on permanent display.

Each year academic researchers carry out important research on items in the collection. There are over 500,000 items in the collections and can be searched in our online database. The collections were ‘Designated’ of national importance in 1999 and the Museum was awarded ‘Accreditation’ status in 2005, which was renewed in 2015. Overseen by the Arts Council the ‘Accreditation Scheme sets out nationally-agreed standards, which inspire the confidence of the public and funding and governing bodies. It enables museums to assess their current performance, as well as supporting them to plan and develop their services’.



The Library is open for research and contains a local studies collection of books, journals, newspapers and other printed items including photographs and maps concerned with Wiltshire. It has a separate archaeology section which includes a general collection of archaeology books, the principal archaeology journals, the papers of Wiltshire antiquaries and the written records of more recent excavations in the county. The natural history section similarly includes general natural history books, specialist journals and the papers of early natural historians.

The Society and Museum are funded by its members, past and present; admission charges, Wiltshire, Devizes Town and Parish Councils; grants from charitable trusts and fundraising activities.

The Society holds an Annual General Meeting each year to which all Society members are invited. At this meeting the Annual Report and Financial Statements for the year ended 31st March are presented for approval and Trustees elected. Past copies are available from our website.

WILTSHIRE ARCHAEOLOGICAL AND NATURAL HISTORY SOCIETY

(A company limited by guarantee)

Charity Number 1080096 Company Registration Number 3885649

ANNUAL REPORT AND FINANCIAL STATEMENTS FOR THE YEAR ENDED 31 MARCH 2017

CONTENTS

Summary	1
Letter from the Chair	3
Board of Trustees' Report	4
Objectives and Activities of the Society	4
Welcoming Visitors	5
Archive and Library, Finds Liaison Officer, Fundraising	6
Volunteers	7
Society Committees and Working Groups	8
Collections - Acquisitions of the year, Archaeology	9
Collections - Numismatics, Art	10
Collections - Recent History, Natural History, Conservation	11
Exhibitions	12
Loans	13
Researchers	14
Publications	15
Activities, Events, Lectures and Outings	16
Wiltshire Archaeology Field Group	17
Learning and Outreach	18
Membership	19
Development - Working with Partners	20
Plans for the Future	21
Trustees' Financial Review	22
Structure, Governance and Management	25
Reference and Administrative Information	26
Report of the Auditors	27
Statement of Financial Activities	28
Balance Sheet	29
Notes to the financial statements	30
Collections Trust – Statement of Financial Activities and Balance Sheet	37
Collections Trust – Notes to the Financial Statements	38
Minutes of the Annual General Meeting held on 15 October 2016	39

LETTER FROM THE CHAIR

The keynote for this year has been partnership working and you will find many fine examples throughout this year's report. Partnership working can bring much increased public benefit not obtainable individually but can also prove very challenging as partners may have different aims and priorities. Organisations we have partnered with have not only included museums within the county and beyond but also many other organisations, including English Heritage and the Wiltshire Historic Buildings Trust.

The beginning of the year saw the *Wiltshire's Story in 100 objects* exhibition at the Museum centred round the Lacock Cup (*pictured back page*). The Museum organised this travelling exhibition, which lasted a year, and involved contributions from 30 museums across the county. This was an innovative project for Wiltshire, the first time that all the museums in the County were showcased in a touring exhibition. We were delighted to be coordinating the project, which was funded by Arts Council England.

We also provided English Heritage with important finds from the collections for exhibition at the Stonehenge Visitor Centre which attracts 1.4 million visitors per year. It is disappointing that this exposure has not converted into more visitors for both our and Salisbury Museums. The two Directors have spent much time trying to improve English Heritage's marketing at Stonehenge for our museums.

In September we announced that we are looking at the potential of moving the Museum to the Devizes Assize Courts, turning the historic building into a landmark tourism asset for the county. Wiltshire Council is working on plans to revitalise the Wharf area of Devizes and, at the same time, working with the Wiltshire Historic Buildings Trust in the hope of finding a solution to the deterioration of the Assize Courts building. Relocating the Museum would be a transformational project, with a world-class building matching the importance of our internationally significant Designated collections. The driving force for the Society is increased public benefit by doubling the number of users including visitors, school groups and those attending lectures. More planning is needed before a decision can be made on whether to go ahead with the project or not, and is conditional on the building being acquired for such use. More on page 21.

Apart from the very public face of the Society in its Museum, lecture and events programme, much work goes on behind the scenes. Every year around 40 postgraduate researchers

use the collections to study specific periods, materials or areas. These studies are published in both popular and specialist journals and by way of talks and lectures and increase knowledge globally of the past. This access is usually provided free of charge and is part of the £30,000 collections care costs that the Society finds from its own resources.

I continue to improve the governance of the Society and during the year a number of opportunities for training for both myself and trustees were taken advantage of. Internally we have delivered a training session for the Board on Risk Management. I have also begun a programme of trustee performance appraisal.

Finances continue to improve with an operating deficiency of only £33,872 this year. The considerable increase of £134,000 in the value of investments, outweighed the shortfall of £39,000 last year. Overall the Society's financial position continues to improve through strict control of expenditure and much fundraising activity. Members past and present continue to contribute well over half of our income. I would like to thank staff and volunteers for their efforts on maintaining the budget. In recent years new expenses have been incurred, including contributions to Wiltshire Council relating to the pension fund deficit, a contribution towards the rates and payment for rubbish collection. Alongside these expenses the grant from Wiltshire Council has been cut and net public funding is now just £670 per annum.

The format of the Report has been changed this year and additional information included to meet the latest accounting requirements. Whilst these changes are intended to be helpful to readers of the Report and improve transparency they do impose a considerable load on a small charity like our own with only two full time staff. This is a distraction from our core purposes and delivery of public benefit. It is hoped that there can be some stability in requirements for the next few years.

At the end of the year we learnt of the death of our former Curator, Dr Paul Robinson. Paul worked for the Society from 1974 to 2008, first as Deputy Curator and then succeeding Ken Annable as Curator. He made many improvements to the Museum during that time. He had continued his interest since retirement and had done much research, which had resulted in articles in our own magazine and elsewhere.

Doug Roseaman

WILTSHIRE ARCHAEOLOGICAL AND NATURAL HISTORY SOCIETY

(A company limited by guarantee)

Charity Number 1080096 Company Registration Number 3885649

BOARD OF TRUSTEES' REPORT

The Trustees present their Annual Report, together with the financial statements of the charity, for the year ended 31 March 2017.

This Annual Report includes the reports and financial statements set out on pages 1 to 38. The Report of the Board of Trustees should be deemed to be the directors' report for the purposes of Company Law.

The reports on the following pages show how the Objects of the Society - see below - are achieved to further the charities purposes for the public benefit. The Trustees have had regard to the Charity Commission's guidance on public benefit. The Director is the senior member of staff responsible for the ongoing operations in consultation with the Chair and his report, and those of the staff, follow, on pages 5 to 21. The Society's committees and working groups provide a number of services to members and the wider public. They cover a wide range of activities from fundraising, industrial archaeology through to expert advice on planning matters. Their work helps promote the Society and its Museum and Archive and Library to a wide audience. Reports from these committees are included in this report. The Society could not operate without the hundreds of volunteer hours provided and also the invaluable funding and support of our membership. Details are included in this report.

The financial statements comply with current statutory requirements, the Articles of Association and the Accounting and Reporting by Charities: Statement of Recommended Practice.

The Society undertakes a huge range of activities and this could not be achieved without the hard work and dedication of Trustees, staff and particularly our team of volunteers. The following is a summary of activities undertaken during the year in line with the Objectives and Activities of the Society. There is more information on pages 5 to 18.

OBJECTIVES AND ACTIVITIES OF THE SOCIETY

The objects for which the Society is registered are to educate the public by promoting, fostering interest in, exploration, research and publication on the archaeology, art, history and natural history of Wiltshire for the public benefit. To achieve this the Society:

- Maintains a museum, library and art gallery and mounts exhibitions to stimulate and enhance appreciation of the county of Wiltshire.
- Promotes, encourages and undertakes research and publishes newsletters, an annual magazine, reports, periodicals, books and other literature which are relevant to its activities.
- Provides lectures and visits on topics and places of interest, both inside and outside the county, to disseminate greater knowledge and appreciation of our heritage.
- Operates an archaeological field group which encourages members to become involved actively in the current archaeological scene in the county.
- Provides activities for young people to enable them to appreciate and develop their understanding of the local environment and its history (including school visits to the Museum and workshops at schools).

The Society and Museum buildings, 41 Long Street, Devizes



ACHIEVEMENTS AND PERFORMANCE

ACTIVITIES: 1. Maintains a museum, library and art gallery and mounts exhibitions to stimulate and enhance appreciation of the county of Wiltshire.

MISSION STATEMENT

Inspiring people to explore the archaeology, history and environment of Wiltshire

Welcoming Visitors

The Museum consists of seven subject galleries: Prehistory (four rooms), Roman, Iron Age, Anglo-Saxon, Medieval, Story of Devizes (two rooms) and Recent History, plus two temporary exhibition spaces and the Archive and Library. These are housed in two Georgian buildings, with Victorian and modern extensions. The property is Grade II listed and located in a conservation area.

Staff are employed to manage the daily operation of the building and collections, assisted by dedicated volunteers. The Museum is open throughout the year, seven days a week from February to October, but this year we closed on Sundays and Mondays throughout the winter. This was not only due to a reduction in funding from Wiltshire Council but also to ease pressure on the Museum buildings, staff and volunteers and to allow for essential 'behind the scenes' work to be undertaken. The Archive and Library is open Tuesday to Friday and the first Saturday of the month by appointment.

This year 20,609 visitors were welcomed to the Museum or took part in outreach activities (18,728 in 2015/16). Our visitors find our Museum 'fun', 'fascinating' and 'enjoyable' and we are rated as one of the top visitor attractions in Wiltshire.

The attention to detail, enthusiasm and warm welcome of our front of house staff and volunteers was recognised by the award of Visitor Attraction Quality Assurance Scheme, run by VisitEngland. In the words of VisitEngland *this is a quality based assessment and the accreditation reflects the visitor experience and the quality of the product and services offered by the attraction and its staff.* Our award followed a visit by a 'mystery shopper' who marked all aspects of the visitor experience, with special mention made of the cleanliness of the Museum and the attractive and wide range of stock in our shop.

During the year we began selling a popular necklace, based on the Bush Barrow lozenge, and trialled a Wiltshire dialect mug. Work on introducing other bespoke items are underway. During the autumn we host Cards for Good Causes, the UK's largest multi-charity Christmas card organisation, which brings in revenue and visitors.

The Lecture Hall is now frequently being used by local groups to host special events, particularly dinners. Catering is usually by Vaughan's Kitchen of Devizes and in April 2017 Melksham Rotary Club were the first group to benefit from the new chairs purchased with funds from a legacy left to the Society by Mr E G Look. The cheery red covers make the Lecture Hall look very welcoming and as the seats are padded they should be much more comfortable than the blue plastic ones!

We have continued to raise the profile of the Museum through conventional press and media activity, but particularly through social media. We are sending a monthly newsletter via e-mail and sending targeted information directly to members, also via email. There have been articles featuring the museum in newspapers including The Times and TV programmes including Inside out West and a forthcoming programme on the US Travel Channel. Our website has had 70,000 visitors, we now have over 7,000 followers on social media platforms such as Facebook and Twitter, and had almost 2 million views of our stories.

Perhaps one of the most significant developments was the announcement in September that the Society is looking at the potential of moving the Wiltshire Museum to the Devizes Assize Courts, turning the historic building into a landmark tourism asset for the County. More on this in Plans for the Future on page 21.

The Director showing the Britton Cabinet to the Bronze Age Studies Group, June 2016.



Archive and Library

This year has been one of consolidation: sorting and reshelving the archive collection following the refit of our store in 2015-16. As material was repacked into new standard sized storage boxes and placed on the new shelving, locations of every item were checked and updated on the computer database. The opportunity was taken to bring together our holdings of the antiquarian papers of John Aubrey, Richard Colt Hoare, William Cunnington, John Britton and Canon Jackson, which had previously been distributed in many different boxes throughout the store, so making it easier for researchers to view these.

During the work a substantial number of items have come to light which had not previously been listed, and with these and new acquisitions during the year there are now over 31,500 items on the Library collections database. These can be searched on the Museum website at www.wiltshireheritagecollections.org.uk/.

Acquisitions during the year included a gift of 22 books from Howard Mitchell and a bequest of a further 20 from late member Alison Maddock. Other notable achievements were the entering of the last of the map collection on to the database and scanning a large number of documents and photographs which can now be viewed on the website.

During the year we were able to make use of the legacy from Miss E J Banks (reported last year) to redecorate the Long Room (*pictured below*), purchase four new computers for the Library, conserve a number of important old books and digitise William Stukeley's commonplace book – the first step towards publishing a facsimile edition in due course.

As in previous years I should like to thank and pay tribute to our dedicated and professional team of over 20 volunteers who both keep the library running and do much work behind the scenes.

Bill Perry

*Left - The Library Long Room after redecoration;
Right - The Potterne Mummers on Twelfth Night.*



Finds Liaison Officer

The Finds Liaison Officer for Wiltshire, Richard Henry, is based at Salisbury Museum. He records finds made by members of the public, including those made by metal detectorists, and records them on the www.finds.org.uk database which now holds information on over 1 million finds from across the country. Richard spends a day a week at the Museum to record finds made in the area, and a detailed list is published each year in WANHM (the *Wiltshire Archaeological and Natural History Magazine*). The post is supported through a British Museum partnership with Salisbury Museum, Wiltshire Museum, Swindon Museum and Wiltshire Council.

Fundraising

A Fundraising Strategy was developed during the year. Led by the Director and Development Officer work is underway to work with Trustees to help them act as ambassadors, open doors and help the charity to grow its network of contacts. They will also help to identify likely sources of support and support the staff in developing applications and detailed strategies.

A number of fundraising events were held during the year, including an Art Auction in April. We would like to thank Martin Nye, Jamie Ede and Alan Cowley for their help and Marc Allum for being our auctioneer. Trustee Mike Pope arranged for David Hempleman-Adams to give a talk on behalf of the Society in April 2017, which raised nearly £900. A successful Twelfth Night celebration event (*pictured below*) was held in January. The generosity of our members and our wider group of supporters is invaluable as we sustain and develop the Museum.

Mr D L Roseaman is our contact for anyone thinking of leaving money to the Society. Legacies form a very important part of the Society's income and allow us to do work that would not otherwise be possible. The work undertaken in the Library was made possible due to the legacy from Miss E J Banks and new chairs were purchased for the Lecture Hall due to the legacy from Mr E G Look.

As we look to possible future developments, the work of fundraising will become increasingly important.

Volunteers

The Museum currently has over 140 volunteers (142 recorded in 2016/17 and 146 in 2015/16) who help and support us in a wide variety of roles and ensure that the Museum continues to provide a high level of service to our visitors. They contribute over 4,000 hours per year, an estimated value to the Society of £55,000.

All of these volunteers deserve a huge thank you for the time they give up to help us, and for all the experience they bring to the Museum. We simply could not function without them.

This year has seen volunteers help with stewarding the Lacock Cup and Wiltshire's Story in 100 Objects Exhibition. They have also helped with the Art and Archive Storage project which saw us improving the storage and documentation of the Art and Archive collections and work is

still ongoing. Volunteers have assisted with the Oexmann Art Award Competition and Exhibition, recording entries for the competition and hanging the children's art work.

These are just a handful of the larger projects we undertake that depend on volunteer help to make them work. Volunteers have also continued to carry out the everyday roles on which we also depend. Everything from welcoming visitors at reception, to Archive and Library cover, from helping run events and serve refreshments to helping maintain gallery costumes, mailing newsletters, or looking after the Museum garden.

All of the roles our volunteers help with are many and varied and we are very grateful to them all.

Heather Ault

Mr Frank Bazeley
Mrs Joann Atkins
Dr J D & Mrs J Belt
Ms Sharon Benfield
Mrs Astrid Bleich
Mr R Brindle
Mr D A Brown
Mrs Jane Brunning
Ms Jan Bryant
Mrs Doreen Came
Mr Roy Canham
Lt Col Colvin Chamberlain
Mr D H Chandler
Mrs Janice Chapman
Dr Walter Chisolm-Batten
Mr Robert Clarke
Mrs Margaret R Clarke
Mrs Nicky Clarke
Mrs A Cleland
Mrs Jenny Collis
Ms Clare Conybeare
Mr Michael Cornwell
Mrs Jean Covington
Mr N J Cowen
Mr Alan & Mrs Sarah Cowley
Mr John Cullimore
Mr Brian K Davison
Mrs Catherine Dawson
Mr R A Dewhurst
Miss J A Drew
Mrs Susan Eborn
Miss Emma Elton
Mrs Paula Evans
Ms Lynne Farrow
Miss Lily Fletcher
Mr Michael Fletcher
Dr James Flood
Mrs Sue Flood
Mrs Isobel Geddes
Mr John Girvan
Mr Peter Goodhugh
Mr C Green

Mr John Greenwood
Mr Jim Gunter
Mr A Hack
Mrs Sarah Harris
Mrs Sandy Haynes
Ms Netta Hemmins
Mr C & Mrs D Henderson
Mr Steve Hobbs
Mr Malcolm Holland
Mr John Howard
Mr Frank Howells
Mr M J Hudson
Mr David Hughes
Mr M Huntley
Mr Jonathan & Mrs Shelagh Hurwitt
Mr Tony & Mrs Carole Jones
Mrs Mary Kane
Dr James Kay
Mr Dallas Kendall
Mr Brian & Mrs Ann King
Mrs Val Knowles
Mr J W Lambert
Miss Amy Langan
Mr Arthur & Mrs Wendy Lansdown
Mr Graham Lever
Mrs Marlene Lewis
Mr Mike McQueen
Ms Stella Maddock
Mrs Adrienne Massey
Prof & Mrs S McGrail
Mr John & Mrs Sandy McGrath
Mrs Joyce McMurray
Mrs Margaret Melsom
Mr Peter Melsom
Mr Dan Miles
Mr Tim & Mrs Ruth Miles
Mr Peter Mitchell
Mr R Mitchell & Mrs C Purchase
Ms Philippa Morgan
Mrs Sara Morgan
Mr Tony Morton
Mrs Christine Mudge

Mr Philip Nokes
Mr Martin Nye
Mrs M Oram
Miss E A Paddon
Mr R W Parrack
Mrs Lesley Payea
Mrs Dilys Peacock
Mr David Pollard
Mrs Sally Price
Mrs Penny Price Jones
Mrs Angela Prophet
Mr M Ramsay
Mr Stuart Raymond
Mr Slater Reynolds
Mrs Dorothy Robertson
Dr Paul & Mrs Diane Robinson
Mrs Doris Roddham
Mrs Sue Roderick
Mrs Judith Roseaman
Mr Rick & Mrs Marion Rowland
Mr Jonathan Sanigar
Mr Mike & Mrs Anne Smith
Mr Peter Smith
Mr P G & Mrs R A Smith
Mrs Penny Spink, MBE
Miss Rachel Stammers
Mr Mike Stone
Mrs Alison Taylor
Mr Michael & Mrs Sue Teale
Mr Colin Thomas
Mr Peter Tolhurst
Mrs Judith Triggs
Mrs Dawn Vernon
Mr Alan Wadsworth
Mrs Marianne Walker
Mr John Watts
Mrs Maggie Watts
Mrs Barbara Welfare
Mrs Wendy Weller
Mr David West
Mrs Susan Wheeler
Mr Mike Williams

Society Committees

Members, Trustees, external organisations and staff work on specific issues through a variety of committees and working groups. We are always looking for more people to be involved in our work, a great way to meet people and to develop skills and experience.

A303 Working Group

This working group was formed during the year to review the Highways England Consultation proposals to improve the A303 past Stonehenge. Members were asked for their views prior to the response from the Board of Trustees, on behalf of the Society, being submitted.

Archive and Library

This committee met during the year to review the management and work of the Archive and Library and to keep volunteers up-to-date with activities and projects. Further details are on page 6.

Buildings and Monuments

This committee has now operated in its current form for over two years reviewing both Swindon and Wiltshire Council's Listed Building Consent (LBC) applications and scheduled monument requests.

The Committee reviewed 211 LBC's (last year 251) making responses on 26 (last year 22). These responses are made as the statutory consultee for the CBA and WANHS to Swindon and Wiltshire Councils. The submissions continue to guide the Councils' decisions in protecting the heritage of the county encouraging the continued use of scheduled structures. The Committee also supported the response to the consultation on the A303 infrastructure changes proposed for Stonehenge.

This Committee where appropriate assists Historic England in the review and updating of the original "English Heritage" listed building archive records for the Swindon/Wiltshire area.

John Baumber, Chairman

Finance Committee

This committee continued to ensure that the assets of the Society are managed in compliance with the various rules and guidelines pertinent to the WANHS status as a registered charity and limited liability company. To this end it promulgates the appropriate policies and procedures are in place and followed.

In a move to get responsibility and accountability in the right area, the routine and day-to-day monitoring and management of approved budgets has been delegated to the Management Committee.

The Finance Committee has held two formal meetings in the last year. Additional meetings are called when events demand it as and when. One of these meetings focused on the investment portfolios of the Society and reviewed the appointed agents (Rathbone Investment Management) who manage the two investment funds against the Board approved objectives and portfolio risk levels.

The Committee continues to review and guide, where appropriate, the compilation of the annual operational budget, major project funding activities and the annual auditors report and actions.

C J Baumber, Secretary

Fundraising, Marketing and Membership

This committee continues to provide support for the stalls we take at events in and around town where we promote the Society and its Museum; and raise some money.

During the year we organised the biennial raffle and associated appeal which raised £3,000. We continue to be very grateful to members for their continued support.

The Committee is also building up a network of members who can keep in touch with those individuals who can no longer come to the Museum for events and lectures. If you can help with this please contact us.

Doug Roseaman, Chairman

Fundraising

A working group, comprising two Trustees - Dr Alison Hems and Mrs Mary Rennie, the Director and the Development Officer was set up. The Working Group will support the Fundraising Strategy agreed by the Board in March 2017. Mr D L Roseaman was appointed 'legacy champion' to work with Trustees and ensure they are confident explaining the power of gifts in wills.

Industrial Archaeology

The high spot of the year, and the culmination of much work by the committee, was the conference on 'Roads and the vehicles that travelled on them'. We continue to attract visitors from the Midlands and South East as well as the South West and Wales to these events. With sponsorship help and the donation of books to sell the conference raised £1,000 for the Society. A 'satisfaction' survey of attendees showed a very high level with many attendees returning year after year. Work has already begun on the 2017 Symposium.

The Committee covers all aspects of Industrial Archaeology and to this end works with many individuals and other organisations across the county. The committee acts as county representative for the national Milestone Society and this year has seen an upturn in activity to protect and restore stones. This even included closing the A303 late one night to locate a long missing stone – successfully.

Doug Roseaman, Committee Secretary

Collections

We continue to actively collect objects that tell the story of Wiltshire and have worked closely with other museums to develop our collecting policy that helps to avoid duplication.

There were many additions made to the collections during the year. A detailed list can be found in the *Wiltshire Archaeological and Natural History Magazine* (volume 110, 2017). Below are some of the highlights.

Acquisitions of the Year

Anglo-Saxon gold object found in Urchfont and dating to the early 7th century AD (*pictured below*). Made from a rectangular strip decorated with an interlaced design and beaded wire, it was once fixed to another artefact through the surviving attachment hole. The strip itself is largely complete, with four finished edges and a border. In size and decoration it resembles a number of rectangular filigrees from the famous Staffordshire Hoard. A Portable Antiquities Scheme Treasure find, purchased by the Museum (2016.19).



Complete Neolithic flaked axehead dating to 3500-2200 BC (*pictured page 42*), found in Warminster in 2016. Donated to the Museum by the finder Mrs Ann Lennard of Warminster (2016.23).

Devizes Prison cell door. The prison was built in 1810 and the door is made of larch with a metal plate laminated between the wood. It has a hinged feeding hatch and a metal framed squint slot window with half-inch thick glass. The door was rescued from the abandoned building after the prison closed in 1921 and in 1973 it was found in Keevil, set into a garden wall. Later the door was returned to Devizes and fitted into Canal Forge at Lower Canal Wharf, where it remained until 2016, when it was donated to the Museum by John Girvan. On the inside of the door two prison inmates have graffitied their names, G WHITE and PETER WILLIS. Now on display in the Story of Devizes Gallery (2016.31).

Archaeology

Roman waterspout made from limestone. In the shape of a fish with open mouth, carved scales and rebate for a waterpipe. Found at Tockenham in 1996, a *Time Team* excavation. Donated by the landowner, Mr David Barnes of Tockenham Manor (2016.5).

Finds archive from the excavation of the Pewsey Roman vessel hoard site PAS15A. The archive includes pottery, stone, flint, ceramic building material, animal bone, charcoal, slate, copper-alloy vessel fragments and iron. Excluded are the eight Roman vessels found. The excavation was undertaken in 2015 to find out more about the context of the hoard. Organic material was also donated to the Museum and the surviving Black Knapweed buds, which are approximately 2,000 years old were put on display in the Saxon Gallery (2016.15) - see front cover.

Medieval silver-gilt annular brooch found in the Bremhill area, dating to the 13th or 14th century. The rim of the brooch has been delicately filed to create a cog wheel effect. The decoration on the front of the brooch has raised filigree and pellet design of foliage (2016.17).

Bronze Age sheet gold fragment found in the Wedhampton area. A line of punched dot decoration running along the original edge is characteristic of Beaker gold work, sometimes found on basket earrings and sun discs (2016.18).

Medieval silver finger-ring fragment with niello inlay, dating to the later 12th century - *pictured below left*. Most of the flat band survives together with one shoulder. The flat bezel is missing. Found in Urchfont (2016.20).

Note: The acquisitions DZSWS:2016.17-20 are Portable Antiquities Scheme Treasure finds, purchased by WANHS using money from the Den Shelton Legacy for the acquisition of archaeological artefacts.



*Left - Medieval silver finger-ring (2016.20);
Right - Copper-alloy enamelled early-medieval buckle fragment (2017.6)*

Incomplete copper-alloy socketed side loop spearhead dating to Middle Bronze Age, c. 1600-1150 BC (*pictured page 21*). The blade is leaf-shaped, showing a prominent central ridge that extends into the old broken shaft. On one side is still visible the attachment point of the side loop. Found in Alton Priors, 2016. Donated to the Museum by Roger Armitage of Sunbury on Thames (2016.24).

Copper-alloy enamelled early-medieval buckle fragment, with possible zoomorphic projection at the tip - *pictured bottom of page 10*. The style of the decoration suggests an Irish origin. Found in Bremhill. Donated to the Museum by the finder, Martyn Leyfield of Easton Grey (2017.6).

Numismatics

Copper-alloy silver plated Roman nummus of Maximian, dating to 298-299 AD (*pictured below*). *GENIO POPVLI ROMANI*. It shows Genius standing facing with a corn measure on his head, holding a cornucopia. Minted in Ticinum (modern day Pavia in Northern Italy) and found in Fittleton. Donated to the Museum by Mrs Pauline Lambourne of Netheravon, who found it whilst out walking (2016.26).



Art

Framed watercolour untitled, believed to be of the Stert Valley, by W R Newman dated 1950. 358mm x 258mm. Donated to the Museum by Mrs M Hammond (2016.1012).

Framed watercolour of St. John's Walk, Devizes, (undated), by W R Newman. 358mm x 267mm. Purchased by the Museum (2016.1013).

Framed watercolour of a Wiltshire Village by W R Newman (*pictured above right*), and dated 1947. 362mm x 270mm. Purchased by the Museum (2016.1014).

Framed watercolour of a stone plinth and cross by Honora Jackson, undated. 305mm x 243mm. Donated to the Museum by Mrs Valerie White (2016.1015).

Framed gouache on art paper entitled: 'Stonehenge stage 2-3 2480BC', by Peter Dunn. 805mm x 1130mm. Purchased by the Museum. (2016.1016).

Framed print of the Royal Wiltshire Yeomanry Bicentenary Parade to commemorate the granting of the Freedom of Devizes, by Joan Wanlyn, dated 1994. 410mm x 600mm. Donated to the Museum by Mr David Carson (2016.1017).



Framed etching, undated and unsigned but believed to be by Christopher Hughes (*pictured page 11*). 175mm x 250mm. Donated to the Museum by Mr Brian Edwards (2016.1018).

Framed etching, undated and unsigned, but believed to be by Christopher Hughes. 175mm x 252mm. Donated to the Museum by Mr Brian Edwards (2016.1019).

Framed etching, undated and unsigned, but believed to be by Christopher Hughes. 175mm x 252mm. Donated to the Museum by Mr Brian Edwards (2016.1020).

Framed signed etching 'Dinkelsbuhl, Bavaria' by Christopher Hughes. 252mm x 175mm. Donated to the Museum by Mr Brian Edwards (2016.1021).

Framed print of Westbury White Horse by Ken Starke, signed and inscribed. 1990. 330mm x 225mm. Donated to the Museum by Mr Brian Edwards (2016.1022).

Etching 'The College Gate' by Edward J. Burrow, (of the gateway and Avenue at Marlborough College), dated 1896. 193mm x 270mm. Donated to the Museum by Mr Brian Edwards (2016.1023).

Etching 'The Old House, Marlboro College' by Edward J. Burrow and dated 1895. 267mm x 194mm. Donated to the Museum by Mr Brian Edwards (2016.1024).

Etching 'The Approach to Marlboro' College' by Edward J. Burrow and dated 1896. 266mm x 192mm. Donated to the Museum by Mr Brian Edwards (2016.1025).

Etching 'The East End Marlboro College Chapel' by Edward J. Burrow and dated 1896. 273mm x 195mm. Donated to the Museum by Mr Brian Edwards (2016.1026).



Etching '*The Pavilion Marlborough College*' by Edward J. Burrow and dated 1896. 1888mm x 267mm. Donated to the Museum by Mr Brian Edwards (2016.1027).

Etching '*Foster's Shop, Marlborough College*' by Edward J. Burrow and dated 1896. 272mm x 195mm. Donated to the Museum by Mr Brian Edwards (2016.1028).

Etching '*Duck's Bridge, Marlboro College*' by Edward J. Burrow, dated 1896. 266mm x 187mm. Donated to the Museum by Mr Brian Edwards (2016.1029).

Etching '*The Oldest House in Marlborough*' by Edward J. Burrow, undated. 263mm x 185mm. Donated to the Museum by Mr Brian Edwards (2016.1030).

Etching '*Marlboro town from the Cricket field*' by Edward J. Burrow, dated 1896. 194mm x 270mm. Donated to the Museum by Mr Brian Edwards (2016.1031).

Framed colour print of the original entrance to the Bear Hotel, Devizes by Herbert Raillon, August 1887. 115mm x 100mm. Purchased by the Museum (2016.1032).

Framed watercolour of Stonehenge by Reginald James Lloyd, signed and dated 2003. 165mm x 240mm. Purchased by the Museum (2016.1033).

Recent History

Nineteenth century earthenware flagon (*pictured right*) made in the Verwood potteries of Dorset was recently found behind a bricked up fireplace inside a small 17th century workers' cottage which was originally part of the Savernake estate, in Burbage. The handle of the jug, no longer attached, was found alongside. A small quantity of gravel and possibly grain were found inside the vessel. Two other vessels were found in close proximity - a stoneware demijohn with Bristol glaze, c.1835 and pieces of a broken bowl of Nottingham stoneware. Also, found next to the vessels, were a button and a bottle cork (which does not fit the flagon), a piece of stick and an odd-shaped stone. Examples of Verwood vessels deliberately deposited within the walls and floors of 17th century buildings have been recorded elsewhere, including a bread bin placed into the wall of a cob outhouse at Prairie Farm.

The jug has been donated to the Museum by the present owner of the cottage, Mrs K Croom (2016.11).

1920s child's christening gown with white work embroidery, cut work and drawn work. The lace collar is probably Bedfordshire Maltese bobbin lace. The gown was found in the attic of The Island, Devizes. Donated to the Museum by Laura Kelly of Trowbridge (2016.16).

Aluminium star that had once been part of one of the Salisbury Plain Training Area monument markers around the East Chisenbury Bronze Age midden site, placed there to protect the site from damage by military vehicles and trench digging. The star was recovered in August 2004, near to the site, after it had been discarded. Donated to the Museum by Dr Colin Shell, Senior Research Fellow at the McDonald Institute, University of Cambridge (2016.22).

Natural History

Two stuffed bustard specimens mounted inside a display case. Transferred to the Museum by the Lackham Museum of Agriculture and Rural Life (NH2016.25).

Conservation

Our collections require constant monitoring to ensure that they are preserved for future generations. Our staff undertake preventative conservation and monitoring to ensure that the collections are displayed and stored in the best conditions that we can achieve and we have been able to improve the storage of a number of collections over the last few years with the completion of the Art and Archive storage project.

All conservation treatments now have to be contracted in from qualified conservators from the Conservation Register. During the year a number of watercolours have been cleaned and re-mounted for display.

For more information about the collections go to www.wiltshiremuseum.org.uk/collections.



Lisa Brown, Heather Ault and David Dawson

Exhibitions

100 Objects

The highlight of the year was the *Wiltshire's Story in 100 Objects* exhibition, featuring the Lacock Cup (pictured rear cover). Inspired by the British Museum and Radio 4 Story of the World in 100 Objects project, this was a touring exhibition that celebrated Wiltshire's Story and the variety of the county's amazing museums. The project was about museums across Wiltshire working together and showcasing their fascinating collections. The exhibition reflected the varied nature of Wiltshire's museums, ranging from small village museums, industrial sites and art galleries to larger museums Designated by the Government as having nationally important collections.

The exhibition was developed by the Wiltshire Museum with funding from the Arts Council and was curated by Amanda Loaring. The highlight of the tour was the Lacock Cup forming the centrepiece of the exhibition at the Museum. Dating from the mid 15th century, the Lacock Cup is the most significant piece of secular English medieval silver. The partially gilded drinking cup had been owned by the Church of St. Cyriac in Lacock, Wiltshire, and used by its congregation, for over 400 years. The Wiltshire Museum and British Museum jointly purchased the Lacock Cup for £1.3 million in 2013, with support from the National Heritage Memorial Fund, the Art Fund and private donations. It is the first time that the British Museum has jointly purchased an object with a regional museum and the first time that the Wiltshire Museum has displayed an object from the National collections. The exhibition won third prize in the Wiltshire Life Arts and Culture Award.

Museum on Tour

The collections of the Society have been seen by thousands of people in a wide variety of exhibitions. The highest profile loan from our collections is to the displays at the Stonehenge Visitor Centre. The project, including our loans, won the 2016 Europa Nostra Prize and Stonehenge was visited by 1.4m people during the year. Smaller scale exhibitions featuring our collections were held at Pewsey Heritage

Centre, Bradford-on-Avon, Open Farm Sunday at Avebury Trusloe and the Cambridge Museum of Archaeology and Anthropology. In addition, our collections were a major feature of the *Stonehenge: Hidden Landscapes* exhibition at the MAMUZ Museum in Austria which attracted 80,000 visitors (see page 13).

Exhibitions

Fantastic Fossils. A children's exhibition with hands-on interactives, August 2016 – February 2017.

To Mametz and Beyond. An exhibition to commemorate the centenary of the Battle of the Somme. Curated by Richard Broadhead of *Wiltshire Soldiers*, August – November 2016.

Yesterdays: an exhibition of photographs and news articles from the archives of the Gazette & Herald, December 2016 – February 2017. Curated by Diane Vose and Trevor Porter, the exhibition accompanied the recently published book *Yesterdays*, which was dedicated to Colin Kearley, who collated the Wiltshire Photographers Archive.

Oexmann Art Award Competition and Exhibition, 2 April – 29 May 2017. Judges Mitch Griffiths, David Inshaw and James Saxton selected winning and exhibition entries from the 220 adult and 305 young person's submissions - including a number from school classes. The Oexmann Art Award was endowed by Richard Oexmann of Owensboro, Kentucky, in memory of his late wife Theophila Joan Oexmann (née Copland-Griffiths) who was raised in Potterne. The object of the competition is to encourage and promote Wiltshire artists and is open to everyone born or living in Wiltshire. This objective is achieved by means of a competition held every two years at which cash prizes are awarded. The awards ceremony in April was attended by members of the Oexmann family.

David Dawson, Lisa Brown, Heather Ault

From left: Richard Broadhead curator of the 'To Mametz and Beyond' exhibition; Diane Vose, curator of the 'Yesterdays' exhibition



Loans

Loans to and from the Museum are important in making the collections available to as many people as possible. The Museum loans items from its collections for display and research, subject to security and conditions. We are particularly pleased to loan objects for special exhibitions at other museums across Wiltshire. During the year, our collections will have been seen by over a million people through our loan of key objects to the Stonehenge Visitor Centre (see page 12).

To the Museum:

A rare and exciting find for eventual display in the Roman Gallery is a block from a stone built tomb, depicting three standing female deities, the Fates - Klotho, Lachesis and Atropos. On loan from St Mary's School in Calne (2017.4)



Another new object on display in the Roman Gallery - a silver denarius (*pictured above*) struck in 46 BC, 89 years before the Roman invasion of Britain in AD 43, was recently found near Bradford-on-Avon. The denarius was central to the Roman currency system from its introduction in 211 BC until around AD 250. During the Republican period, prior to the Empire, coins were usually produced by moneyers and this coin was made by Titus Carisius. On one side of the coin there is Juno Moneta who was the protectress of funds and the coins were struck in her temple in Rome. On the other side is an anvil with a punch die above, tongs to the left and a hammer to the right. These were the tools required to make coins. A silver disc was placed between two dies and struck with a hammer. This particular example has remained in circulation for some time as it is worn. On loan from the finder, Lloyd Akrigg of Hilperton (2016.27).

To other institutions:

Salisbury & South Wiltshire Museum has borrowed a number of items from the art collection for their *British Art: Ancient Landscapes* exhibition running from 8 April to 3 September 2017, including the following:

Pencil watercolour by S Prout after J Britton, of Clatford Bottom, megalithic tomb (*The Devil's Den*), 1802 (1982.3254).

Lithograph entitled '*Avebury Restored*' by John Piper (1982.7561).

A copper engraving of Stonehenge drawn by T Hearne, engraved by W Byrne and T Medland and published in 1786 (1982.7014).

A signed watercolour by George Shepherd of the Merry Maidens stone circle at St. Buryan, Cornwall 1807 (1982.7696).

Initialled watercolour *Sunset at Stonehenge* by Copley Fielding, 1818 (1982.8131).

Copper engraving entitled *A scenographic view of the druid temple at Abury* by W Stukeley, 1740 (1983.2728).

Signed lithograph by Henry Moore, 1971-73 (1992.512).

Signed lithograph entitled *Cleft of Light* by Henry Moore 1971 -73 (1992.517).

Signed lithograph entitled *Cyclops* by Henry Moore 1971-73 (1992.518).

Signed lithograph entitled *Arm and Body* by Henry Moore 1971-73 (1992.520).

Mixed media, cartoon for the stained glass window here at the Wiltshire Museum, by John Piper, 1981 (2003.1007).

Book proposal or dummy by Eric Ravilious entitled *White Horse – A Puffin Picture Book* (2012.1001).

From the Recent History collection a 7-inch vinyl single record entitled *Stonehenge/Culture Shock/Rhythm-ites/Hippy Slags/Military Surplus*, by Hawkwind (2009.5).

Dr Alison Sheridan, the Principal Curator of Early Prehistory at the Department of Scottish History & Archaeology, National Museums Scotland, borrowed the jadeitite axe on loan from Paul Sims of Trowbridge (2015.29), for non-destructive spectroradiometric analysis, to find out more about the origin of the stone, as part of the ongoing *Projet JADE2*. Rather than it being Swiss, Dr Sheridan now believes it comes from Mont Viso in the North Italian Alps.

Bradford-on-Avon Preservation Trust borrowed a small number of objects from the Wiltshire Life Society Collection, for display in an agricultural exhibition at West Barn, Barton Farm, Bradford-on-Avon, April 2016. This exhibition was a re-run of the *One Thousand Years at Barton Farm* exhibition held at the same venue in 2014.

Pewsey Heritage Centre borrowed several objects for a small display about the story of the Vale of Pewsey, August - November 2016.

In January the finds from barrow Mere G6a, including a rare gold sun-disc, were collected from the Museum and transported to the MAMUZ Museum in Austria. The objects are on display for the second phase of the *Stonehenge Hidden Landscape* exhibition, which re-opened to the public at the end of March. Mere G6a replaces the finds from the Roundway G8 archer burial, which were returned to the Museum in February.

Lisa Brown

Researchers

Our collections are Designated by the Government as being of national significance. We welcome a large number of researchers at all levels (23 this year and 33 in 2015/16), whether they are following the story of their house, finding out about a local archaeological site or undertaking post-doctoral research. We publicise the outputs of research through our programme of conferences and lectures and through our publications, particularly the annual *Wiltshire Archaeological and Natural History Magazine*.

- Grahame Allen, researching the pottery from Manton Down Long Barrow.
- Gerald Beasley, Vice Provost and Chief Librarian at the University of Alberta, Canada researching artwork and manuscripts by John Britton for publication of a forthcoming book on John Britton.
- Bryan Berrett, research into Harvey Pridham's drawing of the font from St. Mary's Church, Steeple Ashton, which was missing by 1889.
- Dr Tom Booth, Gerda Henkel Honorary Fellow, Department of Archaeology and Anthropology, Bristol University (i) analysed inhumations for an ancient DNA time transect study of British people in the Neolithic, Beaker, Bronze Age, and Iron Age periods to try to understand how the population composition of Britain got to be the way it is today. Project led Dr David Reich, Harvard University and (ii) analysed samples of human bone from the midden site at Potterne and the Wilsford G58 musical instrument, as part of the project *The Power of Relics: Curating Human Bone in the British Bronze Age*.
- Sarah Botfield, PhD candidate, School of Arts, Languages and Cultures, University of Manchester, examined Grooved Ware pottery found at Marden Henge, to create a 3D model using photogrammetry and reflection transformation imagery photography.
- Keith Bradbury, PhD candidate, Buckingham University, researching the 1967 excavations at the Neolithic site of Oliver's Hill Field, Cherhill, by J G Evans.
- Dave Field and Dave McOmish photographing items in the Museum collections for publication in a book about Wiltshire's Prehistoric Landscapes.
- Sammy Field, PhD candidate, Southampton University, researching age estimation techniques using dentition, examined human teeth dating from the Neolithic to Roman periods.
- Sabine Gerloff, writing a paper for the German journal *Die Kunde*, comparing the sun disc from Moordorf in East Frisia, Lower Saxony, to the sun discs from Britain and Ireland.
- Carol Gilchrist, USA, researching paintings by Henry Grant in the art collection.
- Anthony Gotley, researching artwork of St. Mary's Church Great Bedwyn and drawings by William Lukis.
- David Griffiths, researching the Roman archaeological finds in the Budbury area of Bradford on Avon.
- Joanna Higgins, PhD candidate, Bristol University, researching Early Bronze Age mortuary rites in Southern Britain.
- Rachel Holtom, researching evidence of the textile trade in Devizes.
- Dr Tatiana Ivleva, post doctoral fellow, Newcastle University, collating all published and unpublished references to glass bangles found in Britain, as part of a project Global Glass Adornments Event Horizon in the Late Iron Age and Roman Period Frontiers (100 BC - AD 250).
- Katie Marsden, Assistant Finds Officer, Cotswold Archaeology, examined pottery with white inlay from the late Bronze Age midden site at Potterne, for comparison with similar sherds found at the midden in East Chisenbury.
- Kate Mason, PhD candidate, Bournemouth University, researching people buried in the Stonehenge landscape 4000 - 1500BC, looking at the demography and health of those populations.
- Dr Wendy Morrison, Researcher, Institute of Archaeology at Oxford, analysed fragments of iron slag from the Iron Age site at All Cannings Cross, as part of a research project to contextualise regional and temporal differences in production technique and efficiency of process.
- Dr Carol Neuman de Vegvar, Packard Professor, Art History Fine Arts Department, Ohio Wesleyan University, researching drinking horns in the British Isles from the departure of the Romans to the arrival of the Normans, for feasting, reciprocity and social practices.
- Arthur Robb, researching the archaeology of Malmesbury, for a lecture given to Malmesbury History Society.
- Dr David Roberts, Historic England archaeologist, analysed organic remains from the Neolithic pit, Tilshead Nursery School excavation, to gain a better understanding of pit-digging and deposition in Wiltshire and the chronology and typology of Neolithic pottery,

particularly Peterborough Ware and the transition to Grooved Ware.

- Dr Paul Robinson, researching the Iron Age hoard found at Urchfont for publication in WANHM.
- Phil Wilby, Palaeontology Team Leader, British Geological Survey, photographing fossils from the Oxford Clay at Christian Malford, for a paper for the Journal of the Geological Society.
- Sara Wilson, PhD candidate, Department of Archaeology, University of Reading, analysed samples of ceramic building materials from Littlecote Roman Villa and the Roman tile and pottery production centre at Park Farm, Oaksey, as part of a research project examining the production, supply and distribution of ceramic building materials from the Roman town of Silchester and other sites, looking to compare examples of the same die.

Lisa Brown

Archive & Library. Researchers also use the Archive & Library to research a variety of topics. There were 780 enquiries during the year: 241 visiting researchers and 538 email enquiries and telephone enquiries. In 2015/16 these were 582, 212 and 370 respectively. A few of the researchers are listed here:

- Graham Allen, House of Commons Library: Manton Long Barrow
- John and Barbara Anstie, Sheffield: Anstie family history.

- Kate Aston, Winterbourne Monkton: Imber (photographs).
- John Badgery, Orcheston: Orcheston St George burials.
- Gerald Beasley, University of Alberta, Canada: Antiquarian works of John Britton
- Mr & Mrs Berry, Victoria, Australia: family history (Page and Stretch) Devizes & Alton Priors
- John Chandler, VCH: unpublished works by John Britton, Chippenham area
- Rachel Holton, Melksham: Trowbridge Wool Trade.
- Roger Jocham, Australia: Wiltshire emigration to Australia.
- Mrs Dee LaVardera, Calne: Calne Castle
- Prof D Maudlin, University of Plymouth: History of the Bear Hotel, Devizes.
- Mr Pines, Cirencester: Clement Smith, clockmaker of Devizes.
- Matthew Price: Oram collection.
- Dr Paul Robinson, Potterne: Anglo Saxon coins.
- Karen Rogers: Lydiard Tregoze and Seymour/Goddard family.
- Mrs Jill Russell, Sutton Veny: Everett papers/Sutton Veny
- Brian Trayler, Australia: family history and Wiltshire resident

Bill Perry

Publications

Wiltshire Archaeological and Natural History Magazine

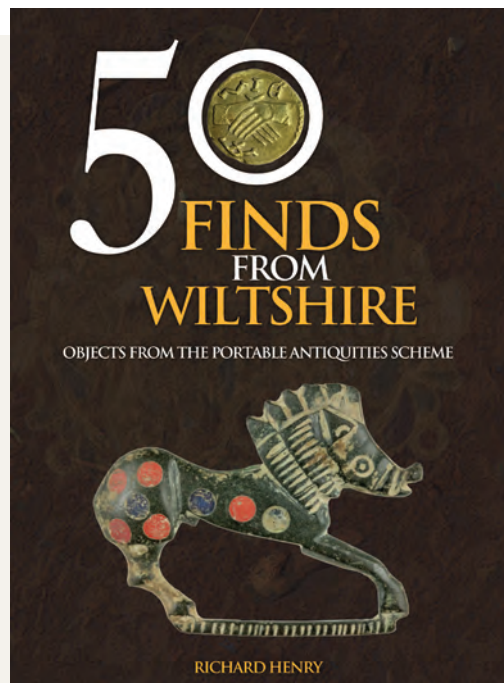
Our annual magazine (WANHM) for 2016 featured articles about the petrology and rock art of Stonehenge, Neolithic and Bronze Age burials, excavations in Salisbury and Swindon and the lost chapel at Bincknoll. It also contains reviews and notes of excavations and fieldwork. The volume was edited by Dr Stuart Brookes and indexed by our new indexer, Sarah Harrison. The publication was coordinated for the Society by Peter Saunders, who has taken over from Bill Perry. Thanks are due to all of those involved in producing such a well-respected journal and especially to the many authors for their contributions. The cover (see page 19) shows a new Museum acquisition – an engraving of Stonehenge by Willem and Joan Blaeu, printed in 1662.

50 Finds from Wiltshire

Finds Liaison Officer, Richard Henry, has published the 50 top finds reported to the Portable Antiquities Scheme from Wiltshire. Of the 50, 12 are now in our collections, either as donations or purchases. The book (pictured right) highlights the contribution that the Scheme has made to our understanding of archaeology across the County and the generosity of those who have donated objects to museum collections. The PAS is a British Museum Partnership and in Wiltshire is led by Salisbury Museum with Swindon Museum, the Wiltshire Museum and the Wiltshire Council Archaeology Service.

Trilithon

This magazine is produced four times a year and is distributed to all Society members and via the Museum shop. The publication is a mixture of articles, items of interest and news about current and forthcoming activities and events.



ACTIVITIES: 3. Provides lectures and visits on topics and places of interest, both inside and outside the county, to disseminate greater knowledge and appreciation of our heritage

ACTIVITIES, EVENTS, LECTURES AND OUTINGS 2016-17

There were a total of 254 events or activities during the year (247 in 2015/16) and with our lecture hall also used for school groups and meetings by external organisations there were almost five uses of museum services or premises per week during 2016/17. This included:

- 9 Society lectures, 2 Conferences and 10 walks, visits and outings (8, 2, 8 in 2015/16)
- 21 special events (16 in 2015/16)
- 47 outside talks and visits (43 in 2015/16)

Thank you to our speakers and walk leaders for their contributions to the Society as most do not charge a fee or claim expenses. We would also like to thank everyone who helps with organising and running our events and activities. A selection of our events are listed below.

April 2016

EASTER HOLIDAY ACTIVITIES: Mosaic Fun

YOUNG WANHS: a Roundway Ramble

LECTURE: A talk about the MAMUZ exhibition and news from the Hidden Landscapes Project, by Julian Richards.

ARCHAEOLOGY CONFERENCE

OUTING - Walking The Dead: Exploring the Museum collections and the Stonehenge ceremonial landscape, with David Dawson.

ARCHAEOLOGY WALK: Imber, led by Roy Canham.

May

YOUNG WANHS: our ancestors relationship with fire

OUTING - Walking The Dead, with David Dawson.

MEMBERS TOUR with Director, David Dawson.

June

HOLIDAY ACTIVITIES: Amazing Artefacts

YOUNG WANHS: visit to West Kennet Long Barrow

EVENING WALK - Avebury and Avebury Trusloe, led by Isobel Geddes.

July

FILM and TALK: The Battle of the Somme, with Richard Broadhead.

YOUNG WANHS: visit to Marden Henge

OUTING: Excavating a Neolithic Henge (Marden Henge).

WALK: An Introduction to the Ecology of the Salisbury Plain Training Area, led by Tony Rowlands.

August

SUMMER HOLIDAY ACTIVITIES: Vikings; Knights & Dragons; Ancient Greek Olympics; Pirate Treasurer; Summer Textiles; Prehistoric Sea Monsters

OUTING: Durrington Walls: A guided tour of the excavations, directed by Mike Parker-Pearson.

AFTERNOON WALK: Dinton-Nadder Valley Landscape, led by Isobel Geddes.

September

YOUNG WANHS: visit to Mother Anthony's Well

LECTURE: *Exploring Avebury*, by Steve Marshall.

October

LECTURE: *Finding Pitt-Rivers Project*, by Jane Ellis-Schön, Project Curator, Salisbury Museum.

AN EVENING AT THE MUSEUM: Tour for Friends of Wiltshire Victoria County History and WANHS members.

YOUNG WANHS: Pottery, with Rosamund Cleal, Curator, Avebury Museum.

HALF-TERM HOLIDAY ACTIVITIES: Dinosaur and fossil themed workshops as part of the National Family Arts Festival.

NIGHT AT THE MUSEUM: What happens in the Museum after all the Curators have gone home?

INDUSTRIAL ARCHAEOLOGY CONFERENCE: The history of roads and the vehicles that travelled on them.

November

YOUNG WANHS: Rock Art.

December

LECTURE: *Search, finding, survey and excavation of the Roman Antikythera shipwreck*, by Phil Short.

YOUNG WANHS: A Journey through Prehistory.

CHRISTMAS FAMILY ACTIVITY: Christmas decorations.

January 2017

TWELFTH NIGHT: An evening of seasonal refreshments, traditional entertainment and auction.

VOLUNTEERS' COFFEE MORNING

WINTER WARMER: Coffee, Cake, Chat and table-top stall. The first in a new monthly social and fundraising activity.

February

LECTURE: *Finding Beaker People*, by Mike Parker Pearson.

YOUNG WANHS: field trip to Bishops Cannings

HOLIDAY ACTIVITIES: Egyptian Gods and Goddesses

LECTURE: *Wills & What to Do With Them*, by Stuart A.

Raymond (the first of a series of lectures)

LECTURE: *A Teapot from the Roof of the World*, by Duncan Walker, Curator of the Russell-Cotes Museum & Art Gallery, Bournemouth.

March

LECTURE: *Devizes Tunnels*, by John Girvan

Below: A guided tour of the excavations at Durrington Walls, led by Mike Parker-Pearson



ACTIVITIES: 4. Operates an archaeological field group which encourages members to become involved actively in the current archaeological scene in the county.

WILTSHIRE ARCHAEOLOGY FIELD GROUP

The Wiltshire Archaeology Field Group (WAFG) is a community archaeology group, working to professional standards. It carries out excavations and fieldwork in Wiltshire including geophysical survey, ground survey and field-walking. Anyone can get involved in research projects, ranging from prehistoric sites to 20th century archaeology. Members have organised practical training sessions on topics including basic excavation and identifying pottery. There have been a number of social events, which include talks on a variety of recent discoveries and new finds. There has also been the opportunity to excavate at Marden by taking part in the University of Reading summer school.

Membership is open to members of the Wiltshire Archaeological and Natural History Society. Regular reports appear in our Trilithon newsletter, and on the WAFG Facebook page. The following is a summary of WAFG activities during 2016/17.

Bromham/Rowdefield Project

For the third excavation season this project expanded the understanding of the Romano-British phase of the site, identifying an additional trackway, further corn driers, and a building. The most notable discovery, and one which has created wider interest, was a Late Neolithic pit. A successful training weekend preceded the main excavation, and was part of on going opportunities for members, which also included two pottery identification days at Wessex Archaeology with Lorraine Mephram, and a short course on QGIS and LiDar by PTS Consultancy.

Savernake Forest - Iron Gates Camp Report

The first part of the survey of the Second World War ammunition depot at Savernake Forest has been completed. The survey of Iron Gates Camp which was one of the domestic camps accommodating troops based at the ammunition depot is now available on the Archaeology Field Group's website: <http://wiltshireafg.weebly.com/savernake-forest-iron-gates-camp-survey-2017.html>

The next stage of the survey is to record the remains of a wartime sawmill run by New Zealand troops, which is located in the middle of the forest just off the Grand Avenue. Concrete remains of a scotch derrick crane, machine blocks and other enigmatic remains have been found but we don't yet know the plan of the sawmill or how it all fits together. If anyone is interested in joining the survey please get in touch with the field group through its website or Facebook page.

Wiltshire Medieval Graffiti Survey is continuing formal surveys on a number of sites. The reaction to the tomb at Sherrington after its reveal at the Archaeology in Wiltshire Conference has been very positive. We are currently looking at the relationship between the water analogy and the apotropaic symbolism as a reference to 17th Century agricultural improvements in the surrounding landscape. This included the canalisation of water from springs to irrigate water meadows leading to increased pasture and an increase in production by local corn mills.



Bromham-Rowdefield Project 2014-18; overhead view of double crop dryer by Mike McQueen. This picture is also used on the front cover of WANHM 2017 (volume 110).

Work is continuing at Calstone which is proving to be a pleasure as the layers reveal more symbolism and includes a large architectural piece that is currently being processed, as well as other pieces so far unique to Wiltshire.

An interim report has been forwarded to Malmesbury Abbey which was requested as part of their conservation programme. This was necessary due to the unique nature of some of our findings and the need to preserve them for the future. An excellent response from them and an example of how seriously our work is being received.

More information about this ever evolving project can be found at www.wiltshire-medieval-graffiti-survey.com.

Jan Dando, Tony Hack and Dan Miles

ACTIVITIES: 5. Provides activities for young people to enable them to appreciate and develop their understanding of the local environment and its history (including school visits to the Museum and workshops at schools).

LEARNING AND OUTREACH

We have had another good year for education at the Museum with over 1,776 children participating in activities we offer, which is an increase from the 1,479 last year. There were 39 schools visits and outreach sessions and 34 activities for children (36 and 39 in 2015/16 respectively). We also welcomed 12 university and college groups and 41 groups (15 and 48 in 2015/16).

Our school sessions continue to be popular, particularly those linked to Prehistory, Romans, Saxons and Vikings. All of our sessions are very interactive with object handling, gallery work, costume, role play, craft and other practical activities. The children seem to get a lot from the sessions and we receive really positive feedback from schools. This year, we created a new education leaflet which was sent out across Wiltshire and led to a number of new schools using us.

We have also started a new education partnership with the National Trust at Avebury, with Mark Routledge running a Stone Age Lifestyle workshop there for schools visiting the site. This has had a good take up so far and helped us to significantly increase our outreach numbers for this year.

As well as schools, we have been working with a number of other groups including Scouts, Guides, Brownies, Rainbows and home education groups. We have run sleepovers and evening sessions at the Museum as well as outreach craft days. These have been a lot of fun for all involved and we have gained a lot of young first time visitors to the Museum through them.



In regards to our family offer, word has spread about our holiday activities and most sell out completely. Sessions are themed around our collections and seasonal events and attract children of all ages. We plan to run more sessions in each of the holidays next year to meet demand.

We also continue to run the Young WANHS Club for children with a special interest in archaeology and history. At present we have 10-15 attending the club and the group get on really well. They have had the chance to be involved in a number of fun archaeological activities including walks, digs at Marden Henge and Mother Anthony's Well and the chance to take part in recording Medieval Graffiti (*pictured above*) with members of the Archaeology Field Group.

In the coming year, I will be developing our Arts Award offer to encourage primary school aged children to be more involved in the arts as well as continuing to develop links with schools through marketing and events for teachers, to hopefully increase our visitor numbers further.

Below: Mark Routledge at the Marden Open Day, 2016

Ali Rushent



The Wiltshire Archaeological and Natural History Society is a member organisation and members receive a number of benefits, including:

- ◇ Free entry to our award-winning Museum and special exhibitions
- ◇ Free welcome tour of museum and library
- ◇ Discounted lectures, conferences, courses and outings
- ◇ Regular newsletter with the latest news and forthcoming events
- ◇ Opportunities to find out more about Wiltshire's story as you get to know fellow members and meet subject experts
- ◇ Opportunities to make new friends by getting involved in the Museum and Society as a volunteer
- ◇ Opportunities to get involved in archaeological fieldwork and excavation with our Wiltshire Archaeology Field Group
- ◇ Opportunities to read the latest archaeological and historical research in your free copy of our annual journal (*pictured right*)
- ◇ Opportunities to find out about where you live with free research access to the 50,000 books, documents, maps and images in our library and archive.
- ◇ Free entry to Salisbury Museum and the Dorset County Museum as part of the Wessex Museums Partnership
- ◇ Knowing that you are helping to support our vital educational work and the long-term care of our nationally important collections.



There are a variety of subscription and payment options available, including monthly payments. Subscription rates were increased on 1 January 2017 in line with inflation, and these are detailed below.

There were 82 new memberships in the year (102 members); and 82 (99) in 2015/2016.

NEW MEMBERS 2016/17

Mr P & Mrs R Addington, Calne
 Ms H Almond, Salisbury
 Mr B Appleby, Devizes
 Mr S Banton, Salisbury
 Mr M Barber, Swindon
 Mr M D Bassett, Marlborough
 Mr J Bond, Devizes
 Mr M Borro, Devizes
 Mr C & Mrs L D Brazier, Chippenham
 Mrs J Brunning, Devizes
 Mr P Bryant & Ms G Bishop, Calne
 Mrs M Butler, Salisbury
 Mrs P Cane, Salisbury
 Mr T M Chataway, Devizes
 Dr W R Chisholm Batten, Alresford
 Dr A Chown, Hove
 Mr A R E & Mrs C Clifford, London
 Mr & Mrs T A G Coleman, Devizes
 Mr C Collicutt, Malmesbury
 Mrs C E & Mr P Corbyn, Devizes
 Mr M Cornwell, Devizes
 Mr P Cox, Chicklade
 Mr P Crampton, Marlborough
 Ms R Dain, Wylie
 Mr R Dallimore, Marlborough
 Mr S Durant & Dr E Madigan, Chippenham
 Miss E Forbes, Salisbury
 Mr A & Mrs D Fuller, Devizes
 Dr C D Gibson, Salisbury
 Mr S & Mrs T Goulding, Devizes
 Mr W & Mrs K Gourley, Bradford On Avon
 Mrs F M Hall, Devizes
 Mr A Hammond & Ms C Read, Westbury

Miss R & Miss J Hart, Fordingbridge
 Mr R Holley, Swindon
 Mr S Howell, Manchester
 Mr M & Mrs S Hunt, Chippenham
 Dr D W Jones, Salisbury
 Dr R Kyle, Chippenham
 Mrs C Lambdin, Trowbridge
 Ms M Larken, Marlborough
 Mr A Leat, Trowbridge
 Miss M Leenstra, London
 Mr C Leigh-Smith, Brentwood
 Dr E T Lewis, Pewsey
 Mr R C Lewis, Devizes
 Mr A Little, London
 Ms R Lock, Devizes
 Ms S Maciness, Amesbury
 Ms T Marsh, Trowbridge
 Ms K Mason, Fordingbridge
 Mr D & Mrs S May, Salisbury
 Mr T McAleavy, Malmesbury
 Mr C C Muscat, Bath
 Mr D O'Donoghue, Newbury
 Mr S Pepper, Melksham
 Ms R Pickersgill, Frome
 Ms C Piddington & Mr J Flatt, Frome
 Mr M A Russell, Devizes
 Mr W & Mrs V Sadleir, Devizes
 Mrs D A Shipp, Malmesbury
 Miss G Smith, Swindon
 Mr K Snowden, Devizes
 Mrs S Stevens, Devizes
 Mrs Z Stiles, Devizes
 Mr J & Mrs O Stoker, Calne
 Ms J A Stoneman, Devizes
 Mr M & Mrs L Surowiec, Devizes
 Mr R G S Swinson, Andover
 Mr C C Taylor, Chippenham
 Dr A Teather, Stockport

Mrs E Tibbetts, Warminster
 Mr W W Underwood, Devizes
 Mr P & Mrs D Vernon, Devizes
 Ms S Vincent, Swindon
 Mr J F B & Mrs A M E Wethered, Marlborough
 Ms M Wheatley, Marlborough
 Ms J White, Marlborough
 Mrs J Williams, East Twickenham
 Mrs P Williamson, Devizes
 Mr A Wright, Calne
 Mr A Ziminski, Frome

SUBSCRIPTION RATES:

at 1 January 2017

Bronze:

Individual - £42.50
 Joint/Family - £55.00
 Student - £23.00
 Member Organisation - £49.50
 Amber Donor - £67.50
 Gold Donor - £127.50
 Corporate membership - £100 and £450
 Life (over 50) - £750
 Life (under 50) - £1,000

Subscriptions run for 12 months from the first day of the month of joining.

Student membership is open to individuals enrolled on a full-time accredited course of study, or on a part-time course of higher education leading to a recognised qualification in the areas of the Society's interests.

DEVELOPMENT

WORKING WITH PARTNERS (organisations)

Wessex Museums Partnership

This was the last of the two years of the Arts Council funded Wessex Museums Partnership, led by Poole Museums Service and including Dorset County Museum, the Russell-Cotes Museum and Gallery and the Salisbury Museum. The project has included work on developing fundraising initiatives, cultural tourism and organisational development. A major part was the employment of Gillian Kenny, our Development Officer. She has been able to support initiatives such as the Art Auction, run a successful Twelfth Night event and develop a new 'Jadeite' membership category. The project has also supported the development of our Board of Trustees, including the development of a more open approach to Trustee recruitment.

The Partnership has also been looking to the future, and has submitted a bid to the Arts Council to become a National Portfolio Organisation (see page 21). If successful, this would include the award of substantial funding to the Partnership from April 2018 to improve collections management, increase community engagement and enhance our special exhibition programmes. We have also established the Wessex Museums Trust and a separate charitable organisation to develop and run projects that will involve all our partner museums, such as an Artist in Residence programme.

Archaeological Archives

As the pace of development in the county continues to increase, particularly with the Army Rebasing Project, there is increasing concern about the future for archaeological archives. Wiltshire Council has recognised the problem in the Core Strategy and during the year has indicated that it will support the acquisition of a new store, jointly by the Wiltshire Museum and Salisbury Museum. At the same time, the Museum is leading the 'Seeing the Light of Day' project to examine the issue of archaeological archives across the South West, working with a wide range of partners including the SW Museums Federation, Historic England and the five largest archaeological contractors in the region. The project has been supported by £45,000 of funding by the Arts Council and is due to report during 2017.

David Dawson

Framed print of the Royal Wiltshire Yeomanry Bicentenary Parade to commemorate the granting of the Freedom of Devizes, by Joan Wanlyn (see page 10) (2016.1017)



PLANS FOR THE FUTURE

Assize Courts

Perhaps one of the most significant developments was the announcement in September 2016 that the Society is looking at the potential of moving the Wiltshire Museum to the Devizes Assize Courts, turning the historic building into a landmark tourism asset for the county.

The building is listed Grade II* and on the Historic England Buildings at Risk Register. It has been empty since the 1980's. The owner has had planning permission and listed building consent to convert the building into flats for a number of years but has not yet implemented the permission. It is hoped the building can be acquired for community use.

Relocating the Museum to the Assize Courts would be a transformational project, linked to a newly revitalised area of the town. It could be a world-class building matching the importance of our internationally significant Designated collections. The building would offer more space, including a café, new library and purpose-built galleries.

The Director and Trustees of the Museum have begun investigating this opportunity. A business plan has been developed to ensure that a move would be financially sustainable and ensure any additional costs of running the new Museum could be met by income from increased visitors and from investing the sale proceeds of the current property.

An online poll following the announcement showed that there is lots of support for the idea of the project amongst WANHS members and the wider community in Devizes. It will be two or more years before a decision can be made on whether to go ahead with the project, and is conditional on the building being acquired for such use. A major fund-raising campaign would be needed to restore the building to its former glory and create the new Museum, which could open in five to ten years' time. Meanwhile the Museum continues to develop its existing offer and attract increasing numbers of visitors and new members.

National Portfolio Organisation (NPO)

Over the last few years, we have been working with Salisbury Museum, Dorset County Museum and Poole Museums Service as the Wessex Museums Partnership. The Arts Council have supported the Partnership with grants to undertake activity such as marketing, development and fundraising. Our museums have now formed the Wessex Museums Trust, a charitable organisation that will support projects and developments across the Partnership.

In June 2017 the Arts Council announced that the Wessex Museums Partnership, led by Poole Museums Service, is to be one of the new National Portfolio Organisations. This means that the Partnership joins organisations such as the RSC, Punchdrunk Theatre Company and the Royal Philharmonic to deliver 'great arts and culture for everyone'. The £1.2 million grant over four years will support outreach and exhibition projects, including a Community Curator working across Wiltshire and an Exhibitions Officer for the Museum.

2016/17 Forward Plan

The Forward Plan outlined a range of activity including the Wiltshire's Story in 100 Objects exhibition, featuring the Lacock Cup (see page 12), the completion of the Art and Archaeology storage project, fundraising events, delivering the Wessex Museums Partnership project and developing a funding application to the Arts Council for National Portfolio Organisation status. The majority of the targets were achieved.

2017/18 Forward Plan

The main actions this year are to create a new Special Exhibition Gallery, enhance our special exhibitions programme, launch a new website and to prepare the implementation of the Wessex Museums Partnership NPO project that will begin in April 2018.

David Dawson



Incomplete copper-alloy socketed side loop spearhead (2016.24) - see page 10.

**TRUSTEES' FINANCIAL REVIEW
FOR THE YEAR ENDED 31 MARCH 2017**

TRUSTEES' FINANCIAL RESPONSIBILITIES

The Trustees (who are directors for the company for the purposes of company law) are responsible for preparing the Trustees' Report and the financial statements in accordance with applicable law and regulations.

Company law requires the Trustees to prepare financial statements for each financial year. Under that Law the Directors have elected to prepare the financial statements in accordance with United Kingdom Generally Accepted Accounting Practice (United Kingdom Accounting Standards and applicable law). Under company law the Directors must not approve the financial statements unless they are satisfied that they give a true and fair view of the state of affairs of the Society and the income and expenditure for that period. In preparing these financial statements, the Trustees are required to:

- Select suitable accounting policies and apply them consistently;
- Make judgements and estimates that are reasonable and prudent;
- Prepare the financial statements on the going concern basis unless it is inappropriate
- to presume that the Company will continue to operate.

The Trustees are responsible for keeping proper accounting records which disclose with reasonable accuracy at any time the financial position of the Company and to enable them to ensure that the financial statements comply with the Companies Act 2006. They are also responsible for safeguarding the assets of the Company and hence for taking reasonable steps for the prevention and detection of fraud and other irregularities.

Internal risks are minimised by the implementation of procedures for the authorisation of all transactions and projects are costed initially and monitored on a regular basis.

The Board employed Rathbone Investment Management during the year and continue to employ them to manage both the investment portfolio and the endowment fund with the primary objective to achieve a balanced return from income and capital at the low end of a medium level of risk.

The Society does not hold any indemnity insurance against any liability for negligence, default, breach of duty or breach of trust by a Trustee.

RISK ASSESSMENT

The risk assessments for all galleries are reviewed regularly and a risk assessment is made of all activities undertaken. On the financial side a budget is prepared each year assessing the likely income receivable and costs of activities, which is monitored carefully and reported to the Trustees at each Board meeting.

PRINCIPAL RISKS

The principal risks facing the Society include falls in the stock market which affect the investment portfolios, long-term staff or trustee absence, inadequate staffing with dependence on a small team of full-time employees, physical risks to the collections or buildings from fire, theft or floods and reductions in grants from local government sources. The Trustees manage these risks by having an investment policy at the low end of medium risk with regular reviews from the investment managers, by having processes for trustee succession, by conducting reviews of staff availability and development and by regular reviews of security.

The Trustees consider, in line with the Charity Commission advice, that the Society should have unrestricted reserves equivalent to at least one year's core costs, that is some £300,000, to provide a measure of security; however, as the Society is dependent on its investments to provide ongoing income for its operations the reserves have to be substantially greater. They were £567,238 at 31 March 2017. The unrestricted reserves are used to support the charitable activities of the Society where there is a deficiency of net income on core activities or to take account of new opportunities.

The Society holds designated funds of £260,481 the purpose of which can be changed by the Board of Trustees and these funds remain part of unrestricted reserves. Restricted funds of £94,764 must be used for a specific purpose. The capital of £269,091 in the Endowment funds is not distributable.

The Society owns the land and buildings of the Museum and these are carried in the accounts at net book value of £92,015. This property is now used for the purposes of charitable activities. If the Museum were to move this property might be available to support the new opportunities.

FINANCIAL REVIEW

The net movement to the unrestricted reserves was £46,194. This included gains in the market value of the main investments of £82,496. The net reduction of £25,095 in Unrestricted Funds attributable to charitable activities, excluding the adjustment of £11,207 to the provision for the pension deficit, was better than budgeted by £21,458.

We continued to receive support from Wiltshire Council who provided their grant of £28,400, although this was reduced by 20% (£7,000) from the previous year and is being reduced further by 10% in 2017/18. This reduction in essential core funding meant that the Museum could no longer afford to open seven days a week during the winter. We also received £3,000 from Devizes Town Council. These grants are very valuable as they are available for core expenses. Specific project grants enable the Society to extend its work in ways it would be unable to undertake without such support and we are extremely grateful for all the grants we receive.

Restricted reserves increased by £16,901 to £94,764 during the year with further donations and legacies of £31,023 being received. Grants of £23,551 were used for substantial building works at the Museum. This year investment income and gains of £17,452 were allocated to restricted funds.

Investment income from the Society's main portfolio and from the Sandell Trust was £58,600, a decrease of £6,208 on the previous year. Net amounts of £95,000 were transferred out of the Society's main investment portfolio to meet expenditure requirements, mainly for projects. After taking into account realised and unrealised gains of £82,496 on the main portfolio of investments and transfers of £12,759 from the restricted and endowment funds the increase in the unrestricted reserves was £46,194. The overall return on investments, including the Endowment Funds and including income and capital gains, was a return of 16.7%, compared with a negative return of 0.81% in the previous year. The overall income return before investment management expenses was 3.7%, compared with 2.9% in the previous year.

The Society does not have a specific policy on social, environmental or ethical considerations. However, its investment managers have a corporate strategy that these are taken into account in all aspects of their business activities.

ENDOWMENT FUND

The Fund is managed at the low end of a medium risk mandate. The gain on investments has increased the value of the Endowment Fund in the year by £37,235, improving on the loss of £14,541 in the previous year.

Under the terms of the Endowment Trust the capital is not available for distribution but must be invested to provide income for the Society at

some future date to be decided by the Trustees.

The Trustees have reserved the right to transfer income received by the Fund to unrestricted reserves from the year ended 31 March 2010. Net investment income of £6,300 after investment expenses of £2,769 was transferred to the unrestricted reserves during the year ended 31 March 2017.

COLLECTIONS TRUST

There are over 500,000 items in the Collections Trust of which 2,500 are displayed in the Museum. There are also some 30,000 items in the Archive and Library collections. Most of these items are assets which were acquired before 1 April 2005 and have no value placed on them in the accounts. These continue to be catalogued and conserved with some items on loan elsewhere as described on page 13. More recent items costing over £1,000 each and totalling £41,746 are included in the balance sheet at cost. During the year £2,785 was received in donations and legacies. These were used with existing cash balances to make acquisitions of £2,295 of items costing less than £1,000 and acquisitions totalling £3,300 of items costing more than £1,000. Those acquisitions are described on page 6 for items in the Archive and Library and on page 9 for items in the main collections.

INCOMING RESOURCES

Incoming resources are allocated on the basis of the purposes for which they are raised, the income for designated and restricted funds being credited to the unrestricted fund and restricted funds respectively. The accounts include £94,764 for restricted funds and £269,091 for the Endowment Fund. These funds are not available to the Society for general use and must therefore be disregarded when assessing the Society's financial position. During the year £5,000 was received due to a generous legacy from Philip Taverner, a former Deputy Chairman of the Society, for general purposes. An anonymous donation of £25,000 was also received.

We may receive a distribution from the estate of the late Dr E A and Mrs A Shearing later in 2017. The distribution is still subject to grant of probate and quantification.

FORWARD PLAN

Each year the Board approves a Forward Plan that contains objectives and targets for the year. The 2016/17 Forward Plan contained targets within the following categories: Society and Administration; exhibitions; collections; displays; publications and promotion; fundraising and events; development; and board development. Most targets were achieved while a few ran late or were held over into 2017/18.

RELATED PARTIES

For many years the Society has enjoyed a close relationship with the Salisbury and South Wiltshire Museum as demonstrated by the reciprocal arrangement for free entry to the museums for members of each organisation and co-operation on exhibitions. Their Director, Adrian Green, is a nominee on our Board and our Director is a nominee on their Board. We built on the relationship by developing the Wessex Museums Partnership with the support of the Arts Council.

The support of Wiltshire Council and Devizes Town Council in providing revenue grants to the Museum is gratefully acknowledged together with the contributions to the Board of their nominated Trustees. We are pleased to continue working in partnership with English Heritage and Salisbury Museum through the Stonehenge Museums Partnership. We are also working with the wider Wessex Museums Partnership, supported by Arts Council England. Led by Poole Museum Service, this also includes Salisbury Museum and Dorset County Museum. The Board is aware that progress through partnership is the most effective pathway to success and will be pursuing every available opportunity to build strong partnerships.

AUDITORS

David Owen & Co. were re-appointed as auditors of the Company at the Annual General Meeting and have expressed their willingness to continue to act.

This report has been prepared in accordance with Accounting and Reporting by Charities: Statement of Recommended Practice applicable to charities preparing their accounts in accordance with the Financial Reporting Standard applicable in the UK and Republic of Ireland (FRS102) (effective 1 January 2015) and in accordance with the special provisions of Part 16 of the Companies Act 2006 relating to small entities.

The Trustees have taken all steps which they ought to have taken to be aware of any relevant audit information and to establish that the Society's auditors are aware of that information. So far as the Trustees are aware there is no relevant audit information of which the Society's auditors are unaware.

Approved by the Trustees on 27 July 2017 and
signed on their behalf by:

Mr D L Roseaman
27 July 2017
Chairman, on behalf of the Board of Trustees

Constitution

Wiltshire Archaeological and Natural History Society (the Society) is a company limited by guarantee, registration number 3885649, governed by its Articles of Association and a charity, registration number 1080096. The latest Articles of Association were agreed by the members at the October 2015 Annual General Meeting. The Objects of the Society are detailed on the inner cover. The members of the Society are subscribing members; in the event of the Society being wound up, the liability in respect of the guarantee is limited to £10 per member.

The Society is the corporate trustee of the Wiltshire Archaeological and Natural History Society Collections Trust, a linked charity, registration number 1080096. The Collections Trust holds all the heritage assets in its collections. The Society does not hold the endowment of the Collections Trust as corporate property.

The Society is also the corporate trustee of the Wiltshire Archaeological and Natural History Society Endowment Fund, a linked charity, registration number 1080096. Under the terms of the Charity Registration the accounts of the Fund are included in the Society's accounts but as a separate charity its funds do not form part of the Society's assets.

Directors and Trustees

The Directors of the charitable company (the Society) are its Trustees for the purpose of charitable law and throughout the report are referred to collectively as "the Trustees".

The Society can have a maximum of 20 trustees. The Chair, Deputy Chair and Treasurer (the Officers) and nine Trustees are elected by the membership, with re-election after three years. Trustees, excluding the Officers, can serve a maximum of six years. Officers are elected annually from amongst the Trustees but can serve for no more than six years in any one role. As nominating bodies, Devizes Town Council and Salisbury and South Wiltshire Museum Trust, can each appoint one Trustee, and Wiltshire Council can appoint two Trustees. The Trustees have the power to co-opt additional Trustees who serve until the end of the next Annual General Meeting at which they may be nominated and elected.

The Society is governed by the Board of Trustees which meets regularly throughout the year. It determines the general policy direction of the Society and discusses matters of importance to the Society. It approves and monitors budgets, Forward and Strategic Plans, all developments, the prioritisation and allocation of resources and approves trustee appointments. Trustees bring outside experience and knowledge which supports that of our small staff.

There is a Management Committee which also meets regularly to review the management and financial affairs of the Museum delegated to the Director and his staff. There are a number of standing committees. Working Groups are formed as needed to deal with specific issues such as the A303 proposals.'

Risk Management

The Trustees have assessed the major risks to which the Charity is exposed including those related to the operations and finances of the Society and Museum, Archive & Library, and are satisfied that systems are in place to mitigate any exposure to major risks. The Chair gave the Trustees a training session on 'Risk Management' based on Charity Commission guidance and a seminar he had attended.

Investment Powers

The Trustees have the power to invest in such stocks, shares, investments and property as they see fit. The Trustees have engaged Rathbone Investment Managers as investment managers and a Finance Committee reviews the portfolio and investment strategy.

Trustee appointment, induction and training

The skills and experience of existing Trustees is reviewed annually and, together with future needs, taken into account when seeking new trustees. The Board has a succession plan and has drawn up a trustee role description. Vacancies are advertised to members and through archaeological and voluntary media. Prospective Trustees are invited to visit the Museum to discuss the role prior to a formal interview. A Working Group consisting of the Chair, Director and two Trustees reviewed applications and interviewed candidates, references are obtained and checks on eligibility to be a trustee and company director made. Those who are considered suitable are recommended to the Board to go forward to the Society's AGM for election by members.

There is an induction process, using a checklist, to help Trustees understand their new role. An induction pack includes information on governance, accounts for recent years, forward plans, minutes of recent Board meetings, policies and other relevant information. They also receive copies of Charity Commission advice (e.g. *The Essential Trustee*) and are recommended to sign up for their e-mail updates. They also receive a personal tour of the Museum, Archive & Library buildings. From time to time Trustees are offered training courses.

WILTSHIRE ARCHAEOLOGICAL AND NATURAL HISTORY SOCIETY

REFERENCE AND ADMINISTRATIVE INFORMATION

LEGAL INFORMATION

Names and registration numbers

Wiltshire Archaeological and Natural History Society (the Society) is a company limited by guarantee, registration number 3885649 and a charity, registration number 1080096.

The Wiltshire Archaeological and Natural History Society Collections Trust is an unincorporated, linked charity, registration number 1080096.

The Wiltshire Archaeological and Natural History Society Endowment Fund is an unincorporated, linked charity, registration number 1080096.

PATRONS

J B Bush, CVO, OBE, CSt.J, JP
P Harding, DUniv, FSA, MIFA
D Inshaw
Mrs S R Troughton, CSt.J, HM Lord - Lieutenant for Wiltshire

BOARD OF TRUSTEES

Chairman:

D L Roseaman, BSc (Eng), CEng, MIMechE

Deputy Chairman:

P R Saunders, BA (Hons), FSA, FMA, FRSA

Hon. Treasurer:

J R V Brandon, LLB, ACA

Elected Trustees:

C J Baumber, CEng, FIMechE, BSc, CDipAF
R Broadhead
C Callow, BSc, ARCS, MBCS
Mr T Daw, MA (Oxon) (from 15.10.16)
D J Field, PhD, FSA, FSA Scot
Ms E U Gaunt (to 15.10.16)
Dr A Hems, BA, PhD, AMA, FRSA (from 15.10.16)
Ms A M Hemmins, BEd, ACE, Cert.Ed. (to 15.10.16)
W A Perry, MSc
M G Pope (to 15.10.16)
Mrs J M Rennie, BA (Hons)

Nominated Trustees:

P Evans, Member, Wiltshire Council
A X T Green, BA, MA, AMA, Director, Salisbury Museum
J Ody, Member, Devizes Town Council (to 04.05.17)
C Williams, Member, Wiltshire Council

ADMINISTRATIVE INFORMATION

STAFF AS AT 31.3.2017

Director: David Dawson, BA, FSA, AMA

Museum:

Curator*: Lisa Brown, BA, MA

Assistant Curator & Volunteer Co-ordinator*: Heather Ault, BA

Learning & Outreach Officer*: Ali Rushent, BA, MA

Development Officer*: Gillian Kenny, PhD, MA, BA

Administration:

Marketing & Administration Manager: Karen Jones, BA

Finance Officer*: Malcolm Church

Museum Assistant*: Jackie Davies

Publicity Officer*: Jo Hutchings, BA

Retail Officer*: Caroline Utley, BA, CertTESOL

Visitor Services Officer*: Kathryn Cox

Membership Services & Retail Officer*: Katrin Shepherd (on maternity leave during the year)

*[*part-time]*

FORMAL APPOINTMENTS

Auditors:

David Owen & Co., 17 The Market Place, Devizes, SN10 1BA

Bankers:

Lloyds TSB plc, 38 Market Place, Devizes, SN10 1JD

Investment Managers:

Rathbone Investment Management, 8 Finsbury Circus, London, EC2M 7AZ

Company Secretary:

Mrs K P Jones, BA

Solicitors:

Wansbroughs, Northgate House, Devizes, SN10 1JX

Editor - Wiltshire Archaeological and Natural History Magazine:

Stuart Brookes, BA (Hons), MA, PhD, PGCTiLL

REGISTERED OFFICE

41 Long Street
Devizes
Wiltshire.
SN10 1NS

REPORT OF THE AUDITORS FOR THE YEAR ENDED 31 MARCH 2017

Independent Auditors' Report
to the Members of the Wiltshire Archaeological and Natural History Society

We have audited the financial statements of the Wiltshire Archaeological and Natural History Society for the year ended 31 March 2017 which comprise of the Statement of Financial Activities, the Balance Sheet and the related notes. The financial reporting framework that has been applied in their preparation is applicable law and United Kingdom Accounting Standards (United Kingdom Generally Accepted Accounting Practice), including FRS 102 "The Financial Reporting Standard applicable in the UK and Republic of Ireland".

This report is made solely to the charity's trustees, as a body, in accordance with Chapter 3 of Part 16 of the Companies Act 2006. Our audit work has been undertaken so that we might state to the charity's trustees those matters we are required to state to them in an auditor's report and for no other purpose. To the fullest extent permitted by law, we do not accept or assume responsibility to anyone other than the charity and the charity's trustees as a body, for our audit work, for this report, or for the opinions we have formed.

Respective responsibilities of trustees and Auditors

As explained more fully in the Trustees' Financial Review (set out on page 22) the trustees (who are also the directors of the charitable company for the purposes of company law) are responsible for the preparation of the financial statements and for being satisfied that they give a true and fair view.

Our responsibility is to audit and express an opinion on the financial statements in accordance with applicable law and International Standards on Auditing (UK and Ireland). Those standards require us to comply with the Auditing Practices Board's Ethical Standards for Auditors.

Scope of the audit of the financial statements

An audit involves obtaining evidence about the amounts and disclosures in the financial statements sufficient to give reasonable assurance that the financial statements are free from material misstatement, whether caused by fraud or error. This includes an assessment of: whether the accounting policies are appropriate to the charitable company's circumstances and have been consistently applied and adequately disclosed; the reasonableness of significant accounting estimates made by the trustees; and the overall presentation of the financial statements. In addition, we read all the financial and non-financial information in the Year End Review to identify material inconsistencies with the audited financial statements and to identify any information that is apparently materially incorrect based on, or materially inconsistent with, the knowledge acquired by us in the course

of performing the audit. If we become aware of any apparent material misstatements or inconsistencies we consider the implications for our report.

Opinion on financial statements

In our opinion the financial statements:

- give a true and fair view of the state of the charitable company's affairs as at 31 March 2017 and of its incoming resources and application of resources, including its income and expenditure, for the year then ended;
- have been properly prepared in accordance with United Kingdom Generally Accepted Accounting Practice; and
- have been prepared in accordance with the requirements of the Companies Act 2006.

Emphasis of matter

We draw attention to the financial review section of the Trustees' Financial Report and in particular reference to the viability of the Society.

Opinions on other matters prescribed by the Companies Act 2006

In our opinion, based on the work undertaken in the course of the audit

- the information given in the Trustees' Annual Report for the financial year for which the financial statements are prepared is consistent with the financial statements; and
- the Trustees' Report has been prepared in accordance with applicable requirements.

Matters on which we are required to report by Exception

In the light of the knowledge and understanding of the company and its environment obtained in the course of the audit, we have not identified material misstatements in the Trustees' Report.

We have nothing to report in respect of the following matters where the Companies Act 2006 requires us to report to you if, in our opinion:

- the charitable company has not kept adequate accounting records; or
- the financial statements are not in agreement with the accounting records and returns; or
- we have not received all the information and explanations we require for our audit.

.....
Mr Michael Buckland (Senior Statutory Auditor)
For and on behalf of David Owen & Co,
Chartered Accountants and Statutory Auditors
17 The Market Place, Devizes, Wiltshire
Date: 27 July 2017

WILTSHIRE ARCHAEOLOGICAL AND NATURAL HISTORY SOCIETY

STATEMENT OF FINANCIAL ACTIVITIES

FOR THE YEAR ENDED 31 MARCH 2017

		Unrestricted Funds	Restricted Funds	Endowment Funds	Total Funds 2017	Total Funds 2016
	Note	£	£	£	£	£
Income and Endowments from:						
Donations and legacies	2	107,162	31,023		138,185	107,057
Charitable activities	3	133,359	23,551		156,910	202,948
Other trading activities	5	51,757			51,757	50,446
Investments	7	23,119	2,981	9,069	35,169	30,419
Total		315,397	57,555	9,069	382,021	390,870
Expenditure on:						
Raising funds	8	44,098	955	2,769	47,822	44,364
Charitable activities	9	320,360	47,711		368,071	365,265
Total		364,458	48,666	2,769	415,893	409,629
Net gains/(losses) on investments	14	82,496	14,471	37,235	134,202	(38,868)
Net income/(expenditure)		33,435	23,360	43,535	100,330	(57,627)
Transfers between funds		12,759	(6,459)	(6,300)	0	0
Net movement in funds		46,194	16,901	37,235	100,330	(57,627)
Reconciliation of funds:						
Total funds brought forward		521,044	77,863	231,856	830,763	888,390
Total funds carried forward		567,238	94,764	269,091	931,093	830,763

WILTSHIRE ARCHAEOLOGICAL AND NATURAL HISTORY SOCIETY

BALANCE SHEET
AS AT 31 MARCH 2017

		2017		2016	
	Notes	£	£	£	£
Fixed Assets					
Tangible Fixed Assets	15		92,015		93,470
Managed Investments					
Securities	16	760,075		774,576	
Cash		3,649		578	
			763,724		775,154
Managed Endowment Investments					
Securities	16	261,522		224,908	
Cash		7,605		5,637	
			269,127		230,545
Total Fixed Assets			1,124,866		1,099,169
Current Assets					
Stock		11,696		11,530	
Debtors	17	49,501		46,654	
Cash at Bank		49,615		30,885	
Total current Assets		110,812		89,069	
Liabilities					
Creditors: Amounts falling due within one year	18	106,225		149,322	
Net Current Liabilities			4,587		(60,253)
Total assets less current liabilities			1,129,453		1,038,916
Creditors: Amounts falling due after more than one year	19		198,360		208,153
			931,093		830,763
The funds of the Society					
Endowment Funds	22		269,091		231,856
Restricted income funds	23		94,764		77,863
Unrestricted funds (including Designated funds)	24		567,238		521,044
			931,093		830,763

These financial statements have been prepared in accordance with the provisions applicable to companies subject to the small companies regime and FRS 102 Section 1A.

The notes on pages 30 to 38 form part of these financial statements.

The financial statements were approved by the Trustees on 27 July 2017, and signed on their behalf:

D L Roseaman, Chair

J R V Brandon, Honorary Treasurer

NOTES TO THE FINANCIAL STATEMENTS

FOR THE YEAR ENDED 31 MARCH 2017

1. Statement of Accounting Policies

Basis of Preparation

The financial statements have been prepared in accordance with Accounting and Reporting by Charities: Statement of Recommended Practice (SORP) applicable to charities preparing their accounts in accordance with the Financial Reporting Standard applicable in the UK and Republic of Ireland (FRS102) (effective 1 January 2015), the Financial Reporting Standard applicable in the UK and Republic of Ireland (FRS102) and the Companies Act 2006.

The Company qualifies as a small company under the Companies Act 2006 and as a small charity under the SORP, and accordingly is exempt from producing a cash flow statement.

The Company meets the definition of a public benefit entity under FRS 102. Assets and liabilities are initially recognised at historical cost or transaction value except for the discounting of the liability for the pension deficit or unless otherwise stated in the relevant accounting policy notes.

Company Status

The Company is a company limited by guarantee. The members of the company are subscribing members. In the event of the Company being wound up, the liability in respect of the guarantee is limited to £10 a member.

Tangible Fixed Assets and Depreciation

Tangible fixed assets costing more than £4,000 are capitalised and included at cost. Grant funded purchases are written off in the year of acquisition unless capitalisation is required as a condition of the grant. Depreciation is provided on all fixed assets at rates calculated to write off the cost on a straight line basis over the expected useful economic life as follows:

Freehold Land	Nil.
Freehold Buildings	over 50 years.
Fixtures, Fittings and Equipment	over 5 years.

Investments

Net gains and losses are taken to the Statement of Financial Activities and analysed between realised gains and losses and unrealised gains and losses in note 14 to the accounts. Investment Income has been taken into account on the basis of the due date of payment. As from 1st April 2016 investment income and gains and losses in the main Fund are allocated between Unrestricted Funds and Restricted Funds on the basis of the average net assets in those Funds.

Stock

Stock consists of purchased goods for resale and unsold publications. Stocks are valued at the lower of cost or net realisable value after making allowance for obsolete and slow moving stock.

Incoming Resources

Legacies are normally taken into account when received and if not given for specific purposes are utilised either for general expenditure or for the specific purposes which the Trustees believe the Testator would have approved.

Donations of items for resale are included in receipts when received.

Subscriptions are spread over the year in which they are received. No life membership subscriptions were received in the year.

All receipts and expenditure are shown in full in the accounts.

Grants - where a grant is, wholly or partly, in respect of expenditure to be incurred in the following financial year the appropriate sum is deducted from income and included in liabilities as grants received in advance. Conversely in the following year this procedure is reversed with grants being withdrawn from grants received in advance and treated as income of the current year.

Allocation of Expenditure

Throughout the financial statements, where it is necessary to allocate staff or other costs over objective heads (i.e. museum services, educational work and Library services etc.), this has been done on the assessment of the Director and the Treasurer.

Pensions

During the year to 31 March 2017 pension provision was made for 6 employees by membership of a Pensions Trust Scheme which is principally a defined contribution pension scheme. For any of these employees who were transferred to the scheme initially the Scheme has a limited guarantee on losses under the scheme. This has led to small additional amounts in respect of a deficit being recovered from the company. In October 2016 all employees who were not in the Scheme were offered pension auto-enrolment into the Scheme where applicable. Employer's contributions of £6,364 (2016 - £5,960) have been charged to staff costs as incurred.

NOTES TO THE FINANCIAL STATEMENTS

FOR THE YEAR ENDED 31 MARCH 2017

Some years prior to the year to 31 March 2017 the Society ceased to be a scheme employer in the Wiltshire Pension Fund and, as stated in the 2012 Report, entered into an agreement with Wiltshire Council to reimburse the deficit by payment of £21,000 for each year up to and including December 2031. Full provision of the liability was originally made in the accounts to 31 March 2016 for the amounts payable to December 2031, discounted at 5% per annum over the payment period. An amount of £11,207 was charged in the accounts to 31 March 2017 for the adjustment to the provision for the amounts payable, discounted at 5% per annum over the payment period.

Reserves

The reserves at 31 March 2017 are allocated to Unrestricted Funds, Restricted Funds and Endowment Funds. Unrestricted Funds include Designated Funds.

Going Concern

These financial statements have been prepared on a going concern basis. The trustees consider the use of the going concern basis of accounting appropriate as there are no material uncertainties related to events or conditions that may cast significant doubt about the ability of the company to continue as a going concern.

The Wiltshire Archaeological and Natural History Society Endowment Fund

The Endowment Fund is a charity established to raise and hold capital, the income from which will be used to support the activities of the Wiltshire Archaeological and Natural History Society. The Company is the corporate trustee of the Fund which shares the Company's charity registration number. Under the terms of the Charity Registration the accounts of the Fund are included in the Company's accounts but as a separate charity these funds do not form part of the Company's assets. The investment income from the Endowment Fund is credited to the Unrestricted Funds.

The Wiltshire Archaeological and Natural History Society Collections Trust

The Company is the Corporate Trustee of the Collections Trust which owns the Collections. On 3 March 2004, the Charity Commission issued a Uniting Direction under Section 96 (5) of the Charities Act 1993 stating that the Collections Trust shall be treated as forming part of the Company for the purposes of registration and accounting. The Direction points out that the Company will be the reporting charity and the Collections Trust will be the linked charity. However "the Company does not hold the endowment of the Collections Trust as corporate property. The Company is the Trustee of the endowment and holds the property in trust. At no time can the endowment of the Collections Trust be considered an asset of the Company." Accounts for the Collections Trust have been set up within the Company's books and separate bank accounts have been established. Acquisitions for the collections are made by the Collections Trust. The Collection Trust Accounts are included as a separate schedule with these accounts.

WILTSHIRE ARCHAEOLOGICAL AND NATURAL HISTORY SOCIETY

NOTES TO THE FINANCIAL STATEMENTS

FOR THE YEAR ENDED 31 MARCH 2017

	Notes	Unrestricted Funds £	Restricted Funds £	Endowment Funds £	Total 2017 £	Carried Forward £	Total 2016 £
2 Donations and Legacies							
Membership Subscriptions		35,181			35,181		31,024
Donations and Tax Refunds		39,481	26,023		65,504		27,200
Legacies			5,000		5,000		15,433
Income transferred by Original Society:							
Sandell Trust		32,500			32,500		33,400
		<u>107,162</u>	<u>31,023</u>	<u>0</u>	<u>138,185</u>		<u>107,057</u>

Income from Donations and Legacies for Unrestricted Funds includes £2,852 (2016 £2,258) for Designated Funds.

3 Income from Charitable Activities

Grants and Contributions	4	105,138	23,551		128,689		176,971
Admissions		22,186			22,186		21,977
Education Receipts		6,035			6,035		4,000
		<u>133,359</u>	<u>23,551</u>	<u>0</u>	<u>156,910</u>		<u>202,948</u>

Income from Charitable Activities for Unrestricted Funds includes £232 (2016 £754) for Designated Funds.

4 Grants and Contributions

ACE Designation Grant		2,218			2,218		51,235
Cauldrons - Broomsgrove		400			400	(400)	
Devizes Area Tourism						(65)	2,436
Devizes Area Tourism		52			52	5,295	
Devizes Town Council		3,000			3,000		3,000
Ernest Cook Trust		22			22	5,728	
Exhibitions Gallery						519	2,520
HLF Catalyst Grant		2,338			2,338		6,187
Lacock Cup - Grant		8,634			8,634	768	597
Mamuz Museum - Grant		6,810			6,810	348	3,703
Marlborough White Horse Grant		316			316		2,432
Nat. Manuscript Cons. Trust							
PWG-HLF							
Seeing the Light of Day		5,901			5,901	12,099	
Vale of Pewsey						(937)	937
Viridor			23,551		23,551		
Wessex 5-ACE		32,073			32,073		13,667
Wessex Museum Partnership		14,974			14,974		54,757
Wiltshire Council		28,400			28,400		35,500
		<u>105,138</u>	<u>23,551</u>	<u>0</u>	<u>128,689</u>	<u>23,355</u>	<u>176,971</u>

5 Other Trading Activities

Shop Sales	6	22,741			22,741		21,393
Other Sales		94			94		771
Museum Income		22,944			22,944		21,838
Fund-raising Events		5,978			5,978		6,444
		<u>51,757</u>	<u>0</u>	<u>0</u>	<u>51,757</u>		<u>50,446</u>

6 Shop Sales

Shop sales		22,741			22,741		21,393
Less Purchase cost		<u>14,261</u>			<u>14,261</u>		<u>12,174</u>
Gross Profit		<u>8,480</u>			<u>8,480</u>		<u>9,219</u>
Gross Profit % on sales		<u>37.29%</u>			<u>37.29%</u>		<u>43.09%</u>

WILTSHIRE ARCHAEOLOGICAL AND NATURAL HISTORY SOCIETY

NOTES TO THE FINANCIAL STATEMENTS

FOR THE YEAR ENDED 31 MARCH 2017

Notes	Unrestricted Funds £	Restricted Funds £	Endowment Funds £	Total 2017 £	Total 2016 £
7 Investment Income					
Income from Investments	23,119	2,981	9,069	35,169	30,409
Bank Interest				0	10
	<u>23,119</u>	<u>2,981</u>	<u>9,069</u>	<u>35,169</u>	<u>30,419</u>
8 Expenditure on Raising Funds					
Cost of Sales :					
Shop	14,261			14,261	12,174
Salaries	8,664			8,664	8,368
Members' services	7,128			7,128	5,368
Marketing	(151)			(151)	956
Fundraising costs	4,204			4,204	7,456
Investment management costs	7,403	955	2,769	11,127	7,581
Support costs	2,589			2,589	2,461
	<u>44,098</u>	<u>955</u>	<u>2,769</u>	<u>47,822</u>	<u>44,364</u>
9 Expenditure on Charitable Activities :					
Museum Services	195,326	47,711		243,037	256,186
Library Services	32,732			32,732	26,636
Educational work	33,898			33,898	20,168
WANHM	10,902			10,902	13,279
Support and governance costs	47,502			47,502	48,996
	<u>320,360</u>	<u>47,711</u>	<u>0</u>	<u>368,071</u>	<u>365,265</u>

Expenditure on Charitable Activities for Unrestricted Funds includes £17,458 (2016 £12,439) for Designated Funds.

Support and governance costs include audit fees of £5,150 (2016 - £5,450). Volunteers' travel expenses of £621 (2016 £1,648) have been allocated to the separate activities in the current year.

10 Staff costs

Wages and Salaries	174,562	151,914
Social Security costs	8,438	7,879
Pension costs	17,693	6,073
	<u>200,693</u>	<u>165,866</u>

Staff costs attributable to activities :

Cost of raising funds	8,664	8,368
Charitable activities:		
Museum	113,049	86,694
Library	15,398	15,064
Education	26,766	15,394
Governance	36,816	40,346
	<u>200,693</u>	<u>165,866</u>

Staff costs of £30,511 (2016: £22,383) were funded from grants for projects.

Pension costs include £11,329 (2016: £113) repayment of deficits in previous years.

During the year £21,000 (2016: £21,000) was paid towards the liability for the Wiltshire Council Pension deficit (see note 20).

No employee received emoluments for the period exceeding £60,000.

Key management personnel which consist of the Trustees and the Director were paid a total of £44,542 (2016: £44,101)

The average number of employees in 2017 was 2 full time and 11 part time (2016: 2 full time and 10 part time).

11 Trustees' Expenses

No trustee either received or waived any emoluments for acting as Trustee during the year. Two Trustees have claimed expenses or had their expenses met by the Company. The total amount of expenses reimbursed to Trustees or paid directly to third parties was £1,485. This included reimbursement for expenditure on library expenses, marketing events and projects.

WILTSHIRE ARCHAEOLOGICAL AND NATURAL HISTORY SOCIETY

NOTES TO THE FINANCIAL STATEMENTS

FOR THE YEAR ENDED 31 MARCH 2017

12 Transactions with Related Parties

R. Broadhead, a trustee, provided an exhibition in the Museum about the Battle of the Somme in 1916. His company, Orange and Blue Services Ltd, was paid £4,180 by the Society in 2016.

13 Operating Leases

Payments for operating leases for a telephone system and for a photocopier amounted to £2,927 (2016 £383) during the year. Minimum lease payments are payable as follows:

	2017 £	2016 £
Not later than one year	2,842	2,927
Later than one year and not later than five years	7,814	10,204
Later than five years		904
	<u>10,656</u>	<u>14,035</u>

	Unrestricted Funds £	Restricted Funds £	Main Portfolio £	Endowment Portfolio £	Total 2017 £	Total 2016 £
14 Gains/(losses) on investment assets						
Realised gains/(Losses)	3,229	416	3,645	1,150	4,795	(6,151)
Unrealised gains/(Losses)	79,267	14,055	93,322	36,085	129,407	(32,717)
	<u>82,496</u>	<u>14,471</u>	<u>96,967</u>	<u>37,235</u>	<u>134,202</u>	<u>(38,868)</u>

15 Tangible Fixed Assets

	Freehold Land £	Freehold Buildings £	Fixtures, Fittings & Equipment £	Total 2017 £	Total 2016
Cost at 1 st April, 2016	72,750	72,750	7,345	152,845	152,845
Accumulated Depreciation at 1 st April, 2016		52,130	7,245	59,375	57,965
Charge in year		1,455		1,455	1,410
Accumulated Depreciation at 31 st March, 2017		53,585	7,245	60,830	59,375
Net Book Value at 31 st March, 2017	<u>72,750</u>	<u>19,165</u>	<u>100</u>	<u>92,015</u>	<u>93,470</u>

The freehold land and buildings transferred from the original unincorporated Wiltshire Archaeological and Natural History Society (Charity no. 309534 - the original Society) in November 2003 were included in the balance sheet at book values. These were measured at £145,500 (as valued professionally in 1987) less accumulated depreciation on freehold buildings of £34,160. The Trustees have decided not to apply a valuation to the property.

	Main Portfolio 2017	Endowment Portfolio 2017	Main Portfolio 2016	Endowment Portfolio 2016
16 Quoted Fixed Asset Investments				
Market Value at 1 st April, 2016	774,576	224,908	826,681	245,743
Purchases	70,101	35,556	425,386	130,257
	<u>844,677</u>	<u>260,464</u>	<u>1,252,067</u>	<u>376,000</u>
Sales	181,569	36,177	453,164	136,551
	<u>663,108</u>	<u>224,287</u>	<u>798,903</u>	<u>239,449</u>
Net profits/(losses) :				
Realised	3,645	1,150	(3,200)	(2,951)
Unrealised	93,322	36,085	(21,127)	(11,590)
Market value at 31 st March, 2017	<u>760,075</u>	<u>261,522</u>	<u>774,576</u>	<u>224,908</u>

NOTES TO THE FINANCIAL STATEMENTS

FOR THE YEAR ENDED 31 MARCH 2017

	Total 2017	Total 2016
17 Debtors		
Grants and Donations receivable	24,267	23,849
Trade Debtors	1,885	1,438
Debtors and Prepayments	15,081	4,508
Gift Aid refund receivable	5,000	6,500
VAT recoverable	568	4,859
Monies owed by the original Society	2,700	5,500
	<u>49,501</u>	<u>46,654</u>
18 Creditors: Amounts falling due within one year		
Grants received in advance	23,355	49,711
Trade Creditors	13,797	38,726
Accruals	9,388	9,650
Pension Contributions	0	1,030
Pension deficit (see note 20)	20,442	20,442
Taxes including NIC	2,248	2,378
Prepaid membership subscriptions	21,036	19,835
Other Income in Advance	15,959	7,550
	<u>106,225</u>	<u>149,322</u>
Accruals include £36 (2016 - a reduction of £1,311) relating to the Endowment Fund.		
19 Creditors : Amounts falling due after more than one year		
Pension deficit (see note 20)	198,360	208,153
	<u>198,360</u>	<u>208,153</u>

20 Pension Deficit

The Society has an agreement with Wiltshire Council to reimburse a deficit with the Wiltshire Pension Fund in relation to two former employees by payment of £21,000 for each year up to and including December 2031. Full provision subject to discounting 5% over time from 31 March 2017 has been made in creditors. The charge for the year to 31 March 2017 for the discounted part of the provision was £11,207.

21 Analysis of net assets between Funds

	Unrestricted Funds	Restricted Funds	Endowment Funds	Total 2017	Total 2016
Fund values at 31 March 2017 are represented by:					
Tangible Fixed Assets	92,015			92,015	93,470
Managed Investments	671,986	91,738	269,127	1,032,851	1,005,699
Current Assets	107,786	3,026		110,812	89,069
Creditors: amounts falling due within one year	(106,189)		(36)	(106,225)	(149,322)
Creditors: amounts falling due after one year	(198,360)			(198,360)	(208,153)
	<u>567,238</u>	<u>94,764</u>	<u>269,091</u>	<u>931,093</u>	<u>830,763</u>

22 Endowment Funds

	Balance 1 st April 2016	Investment Income	Investment expenses	Gain on investments	Inter-Fund Transfers	Balance 31 st March 2017
	£	£	£	£	£	£
Endowment Trust Fund	231,856	9,069	(2,769)	37,235	(6,300)	269,091

The Endowment Trust Fund is a separate charity, of which the Company is the corporate trustee. It is established to raise capital, the income from which will be paid to the Company for its general use. The funds are invested separately and do not form part of the Company's fixed assets.

WILTSHIRE ARCHAEOLOGICAL AND NATURAL HISTORY SOCIETY

NOTES TO THE FINANCIAL STATEMENTS

FOR THE YEAR ENDED 31 MARCH 2017

23 Restricted Funds

	Balance 1 st April 2016 £	Income £	Investment income	Expenses £	Gain on investments	Transfers £	Balance 31 st March 2017 £
English Heritage Fund	4,521	127	187	(60)	908		5,683
Oexmann Fund	17,000	660	615	(4,729)	2,984		16,530
Wiltshire Environment Gallery						10,250	10,250
Donations and Grants	1,346	48,787	385	(27,724)	1,870	(4,999)	19,665
Legacies	54,996	5,000	1,794	(16,153)	8,709	(11,710)	42,636
	<u>77,863</u>	<u>54,574</u>	<u>2,981</u>	<u>(48,666)</u>	<u>14,471</u>	<u>(6,459)</u>	<u>94,764</u>

Income in restricted funds includes:

Donations and Tax Refunds	26,023
Legacies	5,000
Grants and Contributions	<u>23,551</u>
	<u>54,574</u>

The restricted funds may only be used for specific purposes :

English Heritage Fund	To finance specific publications and projects.
Oexmann Fund	To finance a biennial art exhibition.
Donations and grants	Donations and grants received for use in future projects
Legacies	Legacies received for use in future projects.

These fund balances at 31st March 2017 are held as part of the Company's overall assets and cash at bank.

Investment returns have been allocated pro-rata to the individual funds in the year to 31 March 2017. Investment income and capital losses in the previous year have not been allocated.

24 Unrestricted Funds

	Balance 1 st April 2016 £	Donations & Legacies £	Other Income £	Expenses £	Gain on investments £	Inter-Fund Transfers £	Balance 31 st March 2017 £
Designated funds:							
Archaeology Field Group	1,989	1,352		(798)			2,543
Improvement Fund	11,112						11,112
Library Fund	6,491	78	232	(8,481)		6,255	4,575
Programme Committee	13,841						13,841
Publications Fund	17,496	1,422		(1,182)			17,736
Wiltshire Life	217,671			(6,997)			210,674
	<u>268,600</u>	<u>2,852</u>	<u>232</u>	<u>(17,458)</u>	<u>0</u>	<u>6,255</u>	<u>260,481</u>
Other unrestricted funds	252,444	104,310	208,003	(347,000)	82,496	6,504	306,757
	<u>521,044</u>	<u>107,162</u>	<u>208,235</u>	<u>(364,458)</u>	<u>82,496</u>	<u>12,759</u>	<u>567,238</u>

The purpose of the designated funds (which may be changed by the Company's Board of Trustees and which remain part of the unrestricted funds) is currently:-

Archaeology Field Group	To finance archaeological activity.
Improvement Fund	Established by the original Society to finance improvements to the Galleries.
Library Fund	To finance items of library conservation and management.
Programme Committee	To finance members' events and generate funds for the Society.
Publications Fund	To finance publications. (The expenditure is the cost of a write down in the value of stocks)
Wiltshire Life	To finance the care and development of the Wiltshire Life Society Collections. The expenditure consists of direct costs and does not include curatorial charges.

Allocation of expenditure from Designated Funds is reviewed regularly. The timing of expenditure is over a period which matches the requirements of each purpose, potentially over a number of years. Investment returns are not allocated to designated funds.

**WILTSHIRE ARCHAEOLOGICAL AND NATURAL HISTORY SOCIETY
COLLECTIONS TRUST - Linked Charity Number 1080096**

**STATEMENT OF FINANCIAL ACTIVITIES
FOR THE YEAR ENDED 31 MARCH 2017**

	Unrestricted Funds £	Restricted Funds £	Total 2017 £	Total 2016 £
Income and Endowments from:				
Donations and legacies	2,785		2,785	7,509
Charitable activities:				
Grants	0		0	24,174
Sale	26		26	26
	<u>2,811</u>	<u>0</u>	<u>2,811</u>	<u>31,709</u>
Expenditure on charitable activities:				
Acquisitions costing less than £1,000				
Museum	1,438		1,438	1,400
Library	857		857	651
	<u>2,295</u>	<u>0</u>	<u>2,295</u>	<u>2,051</u>
Costs				
Sundry	0		0	339
	<u>2,295</u>	<u>0</u>	<u>2,295</u>	<u>2,390</u>
Net income	516	0	516	29,319
Inter Fund Transfers				0
Balance at 1 April 2016 brought forward	48,823	4,252	53,075	23,756
Balance at 31 March 2017 carried forward	49,339	4,252	53,591	53,075

BALANCE SHEET AT 31 MARCH 2017

Heritage Assets

Balance at 1 April 2016	38,446	11,134
Acquisitions over £1,000	3,300	27,312
Balance at 31 March 2017	<u>41,746</u>	<u>38,446</u>

Current Assets

Cash in Bank	11,845	14,629
	<u>53,591</u>	<u>53,075</u>

The Funds of the Trust	Balance at 1 April 2016 £	Income, Grants & Donations £	Inter Fund Transfers £	Expenditure £	Balance at 31 March 2017 £
Unrestricted Funds - Museum and Art	48,823	2,811		2,295	49,339
Restricted Funds	4,252				4,252
	<u>53,075</u>	<u>2,811</u>	<u>0</u>	<u>2,295</u>	<u>53,591</u>

WILTSHIRE ARCHAEOLOGICAL AND NATURAL HISTORY SOCIETY

COLLECTIONS TRUST - Linked Charity Number 1080096

NOTES TO THE FINANCIAL STATEMENTS

Museum and Art Collections: The collections fall within the definition of heritage assets for the purposes of the Charities SORP (FRS 102).

Accounting Policies:

1. No value has been placed on the collections held prior to 1 April 2005. To establish a value would involve significant costs, onerous compared to the additional benefit derived by the users of the financial statements.
 2. The Trustees have adopted a policy whereby acquisitions costing less than £1,000 are not capitalised but are written off in the year of purchase.
 3. Acquisitions costing in excess of £1,000 are capitalised and stated at cost as heritage assets.
 4. No depreciation is provided on heritage assets as all are deemed to have indefinite lives.
- Policies for acquisition, disposal and conservation of heritage assets meet Accreditation Standard, which has been awarded by the Arts Council, and have been approved by the Board of Trustees.
5. Heritage assets acquired by donation have substantial historical value, but it is impracticable to obtain a valuation of them as it would involve significant and onerous costs.

Summary of Transactions:

	Year to:				
	31.03.2017	31.03.2016	31.03.2015	31.03.2014	31.03.2013
	£	£	£	£	£
Cost of acquisitions of heritage assets	3,300	27,312			
Value of assets acquired by donation and not reported in the Balance Sheet (see Note 5)					
Carrying amount of heritage assets disposed of and proceeds received					
Cost of assets written off in year of purchase as per accounting policy	2,295	2,051	1,725	5,423	1,164

WILTSHIRE ARCHAEOLOGICAL AND NATURAL HISTORY SOCIETY
Charity No: 1080096 Company No. 3885649
MINUTES OF THE 17th ANNUAL GENERAL MEETING OF THE COMPANY
held in the Town Hall, Devizes on Saturday 15 October 2016, commencing at 2.30 pm

01/16 Present

Mr D L Roseaman (Chair) and members of the Board of Trustees: Mr C J Baumber, Mr J Broadhead (Hon Treasurer), Mr C T Callow, Mrs E Gaunt, Ms A Hemmins, Mr J Ody (Devizes Town Council WANHS Nominee), Mr W A Perry, Mrs J M Rennie, Mr P R Saunders (Deputy Chair), Mr C Williams (Wiltshire Councillor and WANHS Trustee); Trustees Elect Mr T Daw and Dr A Hems and 72 members of the Society.

In Attendance:

Mr D Dawson (Director), Mrs K P Jones (Minute Taker and Company Secretary).

02/16 Apologies for Absence

Were received from: Mr R Broadhead (WANHS Trustee), Mrs N S Cawthorne, Mr & Mrs O D H Clauson, Cllr P Evans (Wiltshire Councillor and WANHS Trustee), Mr D Field (WANHS Trustee), Mr A X T Green (Director, Salisbury Museum and WANHS Trustee), Dr P Harding (Patron), Mrs A Kempson, Mr B King, Ms S Maddock, Mr A Mills, Mr M Pope (WANHS Trustee), Mr M J C & Mrs A Smith, Mr W Stancomb.

03/16 Chair's Opening Address

The Chair welcomed members to the 17th Annual General Meeting of the Wiltshire Archaeological and Natural History Society (Company limited by Guarantee). He advised that the Agenda for the meeting had been circulated before the public announcement of Wiltshire Council's Devizes Wharf Development Project, which included the possibility of the Museum moving to the Assize Courts. Discussion on the topic could not therefore form part of the AGM, but the Director would give a presentation and answer questions about the project after the meeting.

The meeting stood for a few minutes to remember those members of the Society who had died since the last AGM, many of whom had been known to the chairman and members of the Society. Mr R G Bendrey, Mrs D M Claridge, Mrs Joy Francis, Mrs Joan Friend, Mr R F Garton, Mr Bobby Gibbs, Mr F Giles, Mr G Heywood, Professor J M Hinton, Miss Ann M Hutchison, Mr Philip Jones, Mrs Kersty Mason, Mr J Richard Oexmann, Mrs Pat Rugg, Mr J F W Sweet, Major General Mike G Swindells, Miss Janet E Tanner, Mrs Jessie D Williams

Note: these names are those notified to the Membership Secretary; the Society apologises for any omissions.

04/16 Minutes of meeting held 17 October 2015

Proposed by Mr M Teale and seconded by Mr C Callow, the minutes of the AGM held on 17 October 2015 were adopted as a true record of the meeting. The resolution was passed nem con.

05/16 Board of Trustees' Report and Accounts for the year ended 31st March 2016

a) Report by the Chair

The Chair reported that progress continued to be made in developing and updating the Museum. This year it was the turn of the Library, Archive and Art collections to receive attention when new storage racking was installed and conservation work was undertaken. The collections were now stored in much better conditions and access would be much easier. Additional security had been added bringing the Museum up to Government Indemnity Standard which would allow us to borrow items from National Collections. The first of these was the Lacock Cup in the Spring and it was hoped that other exciting objects would follow. The Director, staff and volunteers were congratulated for obtaining the money for these projects and then executing them.

The Chair reminded the meeting that whilst WANHS was a membership organisation, the Society was also a Charity and the Charity Commission expected 'Public Benefit' to be provided. This was done though the Museum, Library and Archive, an education service, publications, exhibitions and series of lectures, classes, conferences and visits. The Chair highlighted some of these including the Archaeology Conference which, now in its third year, had become a much respected event in the archaeology calendar; our flagship publication *WANHM*; conferences and events, which all firmly placed the Society as the leading archaeological society in the county. Provision of free entry to the Museum for children and concessionary rates, together with the subsidised education service offered to schools within the county and beyond, cost the Society about £24,000.

A draw down from reserves was necessary to cover costs, but a great deal of fundraising has taken place. An Art Auction raised £7,000 and Mr Alan Cowley and Mr Martin Nye were thanked for all their work on the event. We were also grateful to everyone who organised the Auction and to Wansbrough's Solicitors for sponsoring the evening, which was thoroughly enjoyed by all who attended. We continue to receive support from the local community and this is best exemplified by T H White's maintenance of our alarm system, free of charge, which saved the Society £1,000 pa, and we are very grateful to them. Earlier in the year each Trustee had identified a fundraising idea which they could themselves execute and these are beginning to show results.

Tony Aldridge, our Treasurer for the last two years, retired from business during the year and decided to spend his retirement travelling. As Treasurer he had greatly simplified the accounts and provided us with simplified management accounts with which we can run the Society and its Museum. Before leaving he found a replacement in James Brandon, a chartered accountant, and a smooth transition took place. The Society is very grateful to Tony for his work and welcome James.

Three trustees were retiring at this meeting - Elisabeth Gaunt was retiring for personal reasons. She had helped both with the legal work of the new Articles or Association and with fundraising for the Museum; and Mike Pope and Annetta Hemmins who had served six years on the Board and were not eligible for re-election. Mike came to us when we acquired the Wiltshire Life Society Collection six years ago (and part of which he is still storing for us) and Netta has been so helpful on the Personnel Committee – a role which she has agreed to continue for the next year.

The Chair continued to look at the governance of the Society to find ways of improving it and to keep an eye on Charity Commission recommendations and news. We try to run a training session during alternate Board meetings and new Trustees receive induction training and are encouraged to attend courses elsewhere. The Board have reviewed the recruitment process for Trustees, particularly focusing on the skills the Board needs to run an organisation of our size. With 16 Trustees we have a broad range of skills between us.

Members were thanked for their continued support as were the staff and volunteers without whom all of this could not continue.

b) Report by the Treasurer

Mr J Brandon presented his first Treasurer's Report having volunteered in November 2015 to become the Hon. Treasurer of the Society. He had prepared the financial parts of the Annual Report and Accounts and he thanked those who contributed to the production of the Annual Report and Accounts, including Malcolm Church who wrote up the underlying accounting records and Karen Jones, our Company Secretary, who collated and formatted all the reports and pictures. Other individuals who contributed were also thanked including David Dawson (Director), Doug Roseaman (Chair), Bill Perry, John Baumber and members of staff including Heather Ault, Lisa Brown, Jo Hutchings and Mark Routledge. The Auditors, David Owen and Co, were also thanked.

The report to this meeting considered the accounts for the Society, but it was noted that the annual report included accounts for the Collections Trust which holds the Museum collections and had recently acquired an Early Saxon gold coin from East Grafton.

The Treasurer reported that the format of the Accounts had changed since last year. This was due to the introduction of a new Statement of Recommended Practice (SORP) with new financial headings and categories. These had to be incorporated in the current year and the comparatives for the previous year amended. The SORP contained 183 pages and the Treasurer had reviewed which disclosures were already shown and which had to change. This had resulted in fewer income and expense categories. The balance sheet was similar to last year except that the reserves were now shown as Endowment Funds (£232,000), Restricted Funds (£78,000) and Unrestricted Funds (£521,000, including Designated Funds). However, it was noted there was one big change on the Balance Sheet and this was the accounting treatment of the liability to Wiltshire Council for the pension deficit, relating to the pensions of two former employees. It was now necessary to provide about £275,000 as a liability as at 1 April 2014, which reduced the unrestricted reserves (including designated reserves) at 31 March 2016 to £521,024,

leaving a smaller but reasonable cushion of £300,000 to cover a year's core costs.

The Accounts showed an overall net movement in funds during the year (2015/16) as a loss of £57,000, compared with a £167,000 surplus in the previous year. The difference (£224,000) was partly due to investment capital losses of £39,000 compared with a gain of £69,000 in the previous year (a difference of £108,000) and also partly due to £108,000 fewer donations. If investment returns and donations are taken out, together with project income and expenses, it is noted that core income and core expenses have remained roughly the same, despite the number of Museum users being down 17% at 18,728. Effectively there is approximately a £76,000 core loss each year which has to be covered by investment returns and donations. The project income helps to cover part of the expenses, such as salaries, but it doesn't cover core costs.

The investment return was much reduced in the year but was still only an £8,000 loss before investment fees compared to a £107,000 surplus in 2015/16; over two years the return averaged about £50,000. The Treasurer was pleased to report that the investment gains to 30 September 2016 were £73,000 and the investment funds were valued at the same date at £1,064,000, although there were no guarantees for the rest of the financial year. Rathbones, our investment managers since April 2015, were continuing to invest at the low end of a medium risk profile.

Income (£360,000) was mainly similar to the previous year except for fewer donations and an increase in income from projects. Expenditure (£409,000) was also similar to the previous year. A £30,000 increase in expenses for Museum services was due to an increase in project expenses which were covered by project income. For the 2016/17 financial year a loss of £47,000 has been budgeted. By 30 September 2016 there was a small deficiency in the management accounts of £1,254, after receiving additional income from art auctions and donations.

In summary, the Society is holding its own in keeping costs under control and maintaining the core income from the museum, assisted by a large number of volunteers. However, it does rely on a continued investment return, which is not always reliable, and additional donations and legacies to cover its running costs. The Treasurer asked members to remember the Society if they were reviewing their will or considering making donations to a charity, however small. All gifts would be worthwhile in helping to maintain and to display the wonderful collections in the Museum.

The financial report and accounts were available from the website or on request from the Museum Office.

c) Report by the Director

The Director highlighted items from the 2015/16 financial year, details of more recent activities and those to come. He started by highlighting the number of activities taking place during the year including lectures, conferences, walks and outings, school visits and outreach sessions, children activities, visits by groups, college and university groups, special exhibitions and much more. Together some three or four activities were undertaken each week. Staff and volunteers were thanked for assisting with all of these events which helped to bring in more members. The learning programme continued to be important and

some of the positive comments received were shown to the meeting. This included a thank you card from a Girl Guide group who had slept over one night and awarded the Museum a 'Night at the Museum' badge. This all continued whilst there were staff changes behind the scenes. The Museum had said hello to Caroline Utley (Retail Officer), Kathryn Cox (Visitor Services Officer) and Gillian Kenny (Development Officer) and thank you and goodbye to Amanda Loaring and Carina Taylor (Archive storage project), Claire Homer (Visitor Services Officer) and Mark Routledge (Outreach Officer). We welcomed back Ali Rushent from maternity leave and said goodbye to Katrin Shepherd who left on maternity leave and welcomed her daughter Isobelle.

Project work continued to be important to maintain the Museum and collections. A project supported by the Designation Challenge Fund had seen the replacement of the wooden shelving in the Archive store with safer and sturdier metal racking. The Art collection was now also stored on new metal racking, and the Friendly Society banners had been conserved and stored more securely. A grant from Viridor Credits, together with a legacy and funds from the *Omnes ad Unum* Pimms Party and Silent Auction, had enabled essential repair work to be carried out on the exterior of the building, including rectifying water leaks, repainting windows and replacing some rotten stonework.

Partnership working continued to develop and the Wessex Museums Partnership (Dorset Museum, Poole Museum, Russell-Cotes Museum and the Salisbury Museum) continued to progress the Art Council funded project (£475,000) on developing tourism, creative programming, fundraising and learning. The partners were building on their combined strengths, sharing expertise and experiences and learning from failures! Research on the visitor experience was part of the project and a slide showed how the Museum fared against museums in the South West. Apart from a lacking of refreshment facilities the Museum scored well, particularly in value for money, retail facilities and in the welcome given to visitors. A 'spotlight' loan programme would see five objects rotated around the Wessex Museums Partnership museums which would highlight objects from other collections. A Wessex Museums Trust was being set up as a separate charity to enable the partnership to apply for funding which they could not do on their own.

The Director also highlighted the problem of storage for archaeological archives, which was also a national problem, but there were some 25m³ of boxes to come to both Wiltshire Museum and Salisbury Museum. He also highlighted the loan of some key objects to an exhibition at Mamuz in Austria, where finds from Wiltshire were displayed alongside those from Austria for the first time. They also had 3D replicas and digital presentations of some of our items, such as the Bush Barrow Chieftain. The exhibition had received some 60,000 visitors since March.

Other ongoing work included developing a tour programme for visitors to explore the Stonehenge landscape and visit both Wiltshire and Salisbury museums; tours of Marden in the summer had been very successful – and profitable. Social media continued to be an important part of promoting the Museum and in the 12 months from October 2015 some 5,000 followers were recorded on Twitter, providing some 12 million opportunities to view!

The star acquisition in recent months had been the gold shilling from East Grafton which had been acquired with funds from members, the Art Fund and the V & A Purchase Grant Fund. It was possible the find spot was linked to nearby Saxon royal settlements and Stuart Brookes and Andrew Reynolds of UCL were interested in investigating further, probably working with the Wiltshire Archaeology Field Group, which continued to go from strength to strength.

There being no questions and proposed by Mr J Baumber and seconded by Mr D Kendall the Trustees Report and Annual Accounts for the year ended 31st March 2016, together with the Auditors Report were received, with two abstentions (Mr A & Mrs W Lansdown).

08/16 Election of Trustees

There were three nominations for Trustees this year, and three candidates: James Brandon (who was co-opted during the year to act as Hon. Treasurer), Tim Daw (a local landowner, member of the Country Landowners Association and had constructed the first long barrow in 5,000 years) and Dr Alison Hems (who had worked for English Heritage and the Museums, Libraries and Archives Council, and set up a new Heritage management MA at Bath Spa University).

All three had been proposed and seconded prior to the meeting. There being no objection to electing all three in one resolution the meeting duly elected Mr J Brandon, Mr T Daw and Dr A Hems to the Board of Trustees, *nem con*.

09/16 Appointment of Auditors

Proposed by Mr J Baumber and seconded by Mr C Callow, the meeting re-elected Messrs David Owen & Co as Auditors, and authorised the Trustees to determine their remuneration. One abstention (Mr A Lansdown).

10/16 Any Other Business

The meeting was opened to members but there were no questions.

There being no further business the Chair thanked everyone for attending the meeting. The meeting closed at 3.05pm.

Date of next Meeting: Saturday 14 October 2017

The meeting was followed by two short presentations, one on *Community Archaeology* by Dan Miles, Research Resources Officer at Historic England and the other by David Dawson on plans for the Assize Courts, Devizes.



Neolithic flaked axehead (2016.23) - see page 9



The Lacock Cup, displayed in the Museum during the 'Wiltshire's Story in 100 Objects' exhibition (see page 12).