

**Through Mud and Blood to find Green fields – tank archaeology and soldier recoveries – Richard Bennett (Breaking Ground Heritage), Richard Osgood (Defence Infrastructure Organisation)**



NEW ZEALAND CAMP SLING BULFORD



# The Future of our disabled sailors and soldiers 1917. Uni of Warwick



ENGINEERING CLASS, ROEHAMPTON



LECTURE ON ELECTRICITY, ROEHAMPTON



WOODWORKING SHOP, ROEHAMPTON



STIFFENING LEATHER BAGS



PAINING UP HANDLES FOR  
LEATHER BAGS

led me to think that he was one of the ordinary teaching staff of Clark's College who had been exempted from Army service. Here he is, however, actually "carrying on" as a commercial instructor in book-keeping and similar subjects in the commercial class at Roehampton, and there is here no lack of discipline, nor of ready sympathy between teacher and taught, but eminently the reverse. The happiest results are likewise achieved in the engineering shops, where there is a "re-fitted" man instructing students in the use of their lathes. This workmanlike fellow in his blue overall was himself from boyhood trained for this and similar jobs. He has a false foot, but was able to scale a ladder to fix belting on the pulleys, set a man to work and come down again in double quick time to speak to me, only to nip across to another lathe where a beginner was in difficulties and again across the floor to the bench of a particularly promising one-armed pupil who was turning out steel parts on another lathe. He was master of his trade and his teaching, and, what was more important, was a living example to every man under his care of what can be done if there be a will and suitable opportunity. One felt instinctively that he was communicating heart and hope as well as technical skill to every man he taught.



ONE ARMED MAN  
REPAIRING ELECTRIC RADIATORS

Such then is the *raison d'être* of the two sets of workshops and the relation of the one to the other.





A LESSON IN MOTOR MECHANICS, ROEHAMPTON.



WIRING OF ELECTRIC LIGHT FITTINGS.



INTERIOR QUEEN MARY'S WORKSHOPS, BRIGHTON.



MAKING SIMPLE GLASSWARE FOR CHEMICAL CLASSES.



LEARNING MOTOR MECHANISM.



EXTERIOR OF RECREATION ROOM, ROEHAMPTON.



BOOTMAKING.  
DRAFTING THE UPPER TO THE LAST.



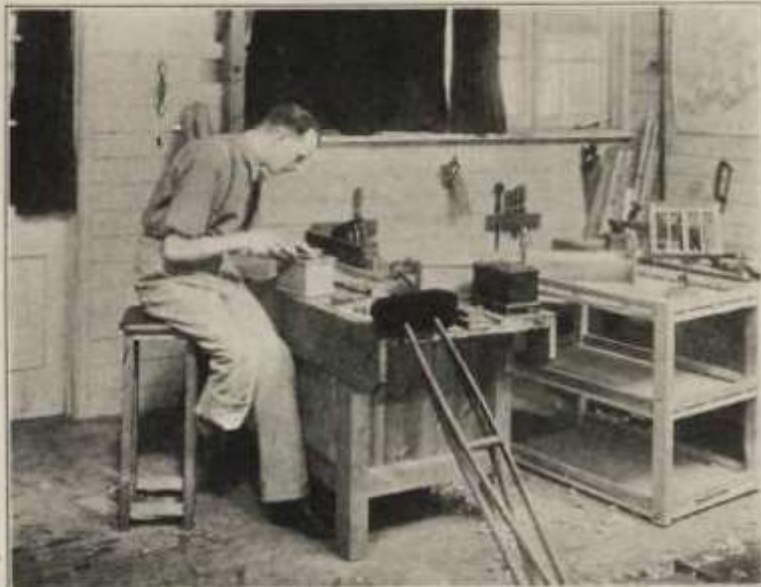
ELECTRICAL SECTION, BRIGHTON.



BOOTMAKING  
BUILDING THE HEEL.



DRILLING WORK FOR SUBMARINE  
FITTINGS.



IN THE CARPENTER'S SHOP.

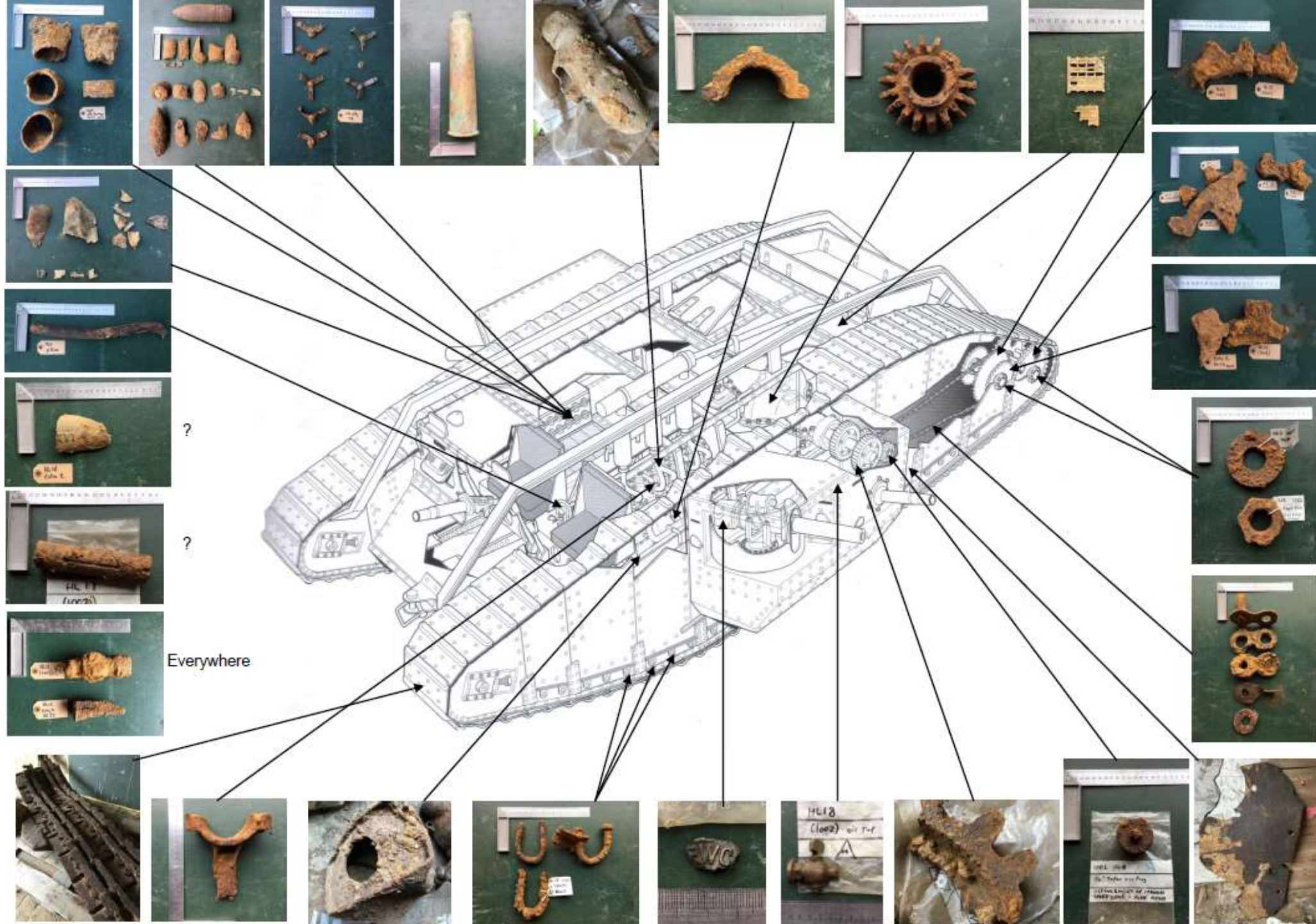




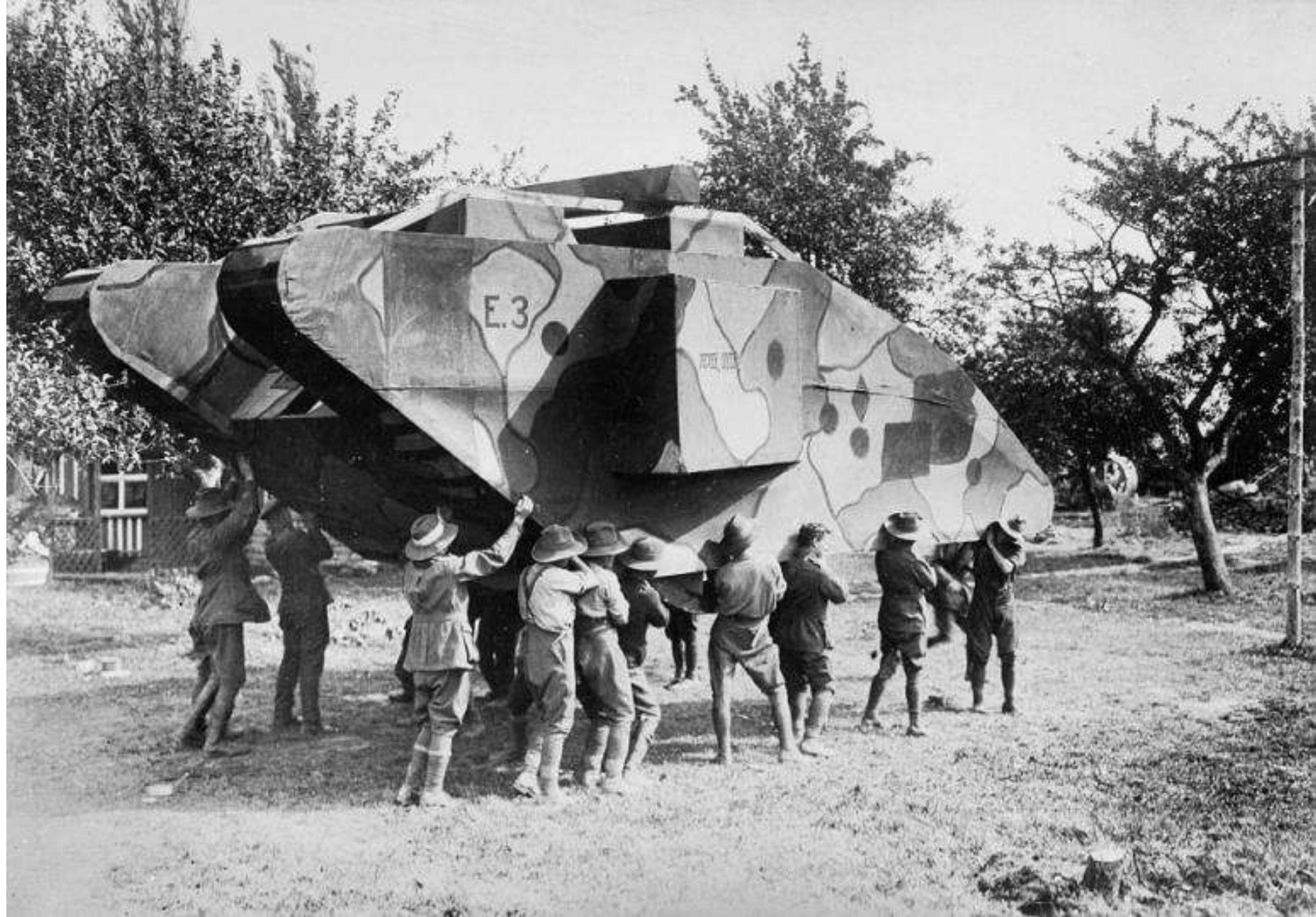














































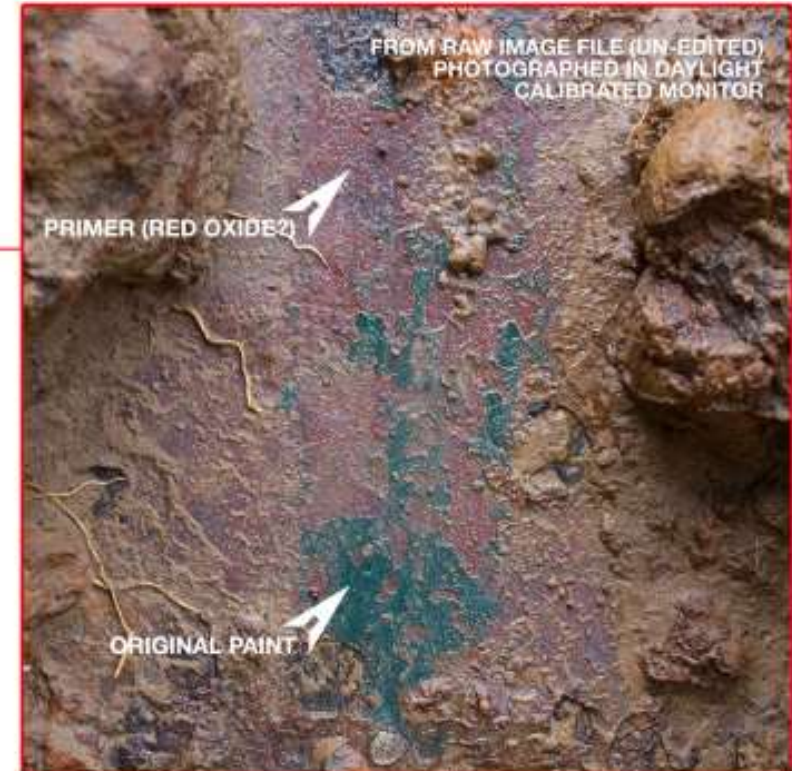
British MK2 Tank D23 #796 | Lt. H Skinner | Bullecourt, France

## COLOUR ANALYSIS

Final Action 11th April 1917 | Excavated 9th June 2017



COPYRIGHT © Harvey Mills Photography 2017



**PANTONE 560C**



Operation Nightingale | Breaking Ground Heritage | Help For Heroes















# WHY ARCHAEOLOGY / HERITAGE?



Archaeology comprises of regimented routines and set procedures.

Veterans come pre-programmed to routines and procedures. Many veterans NEED A CLEARLY DEFINED ROUTINE

In the UK most people have a very basic understanding of archaeology through TV programmes such as the Time Team

**Taking trauma scarred veterans back in the firing line is not without its dangers**



# WHAT ARE THE MOST COMMON AFFLICTIONS TO BENEFICIARIES



- Intrusive thoughts
- Sleeplessness
- Memory problems
- Anger issues
- Hyper vigilance
- Restlessness
- Nightmares
- Self imposed isolation
- Poor concentration
- Lack of motivation
- Imminent 'Flash to Bang'
- Burdensomeness



# Social Support in Military Veterans



- ▶ Our families by their very nature want to protect us from trauma or reminders of trauma. We in turn don't talk to them about our experiences to protect them. They become **buffers**
- ▶ Our Peer network have an intimate knowledge and understanding of what we have done, where we have been, what we have been through and how we **actually** deal with these emotions. They are the **engagers**
- ▶ The medical chain spend a lot of time trying to find out information that they might never be privy to. The engagers get this information without asking.





# PEER-PEER SUPPORT NETWORK

Archaeology facilitates the getting together of like-minded individuals for a common purpose



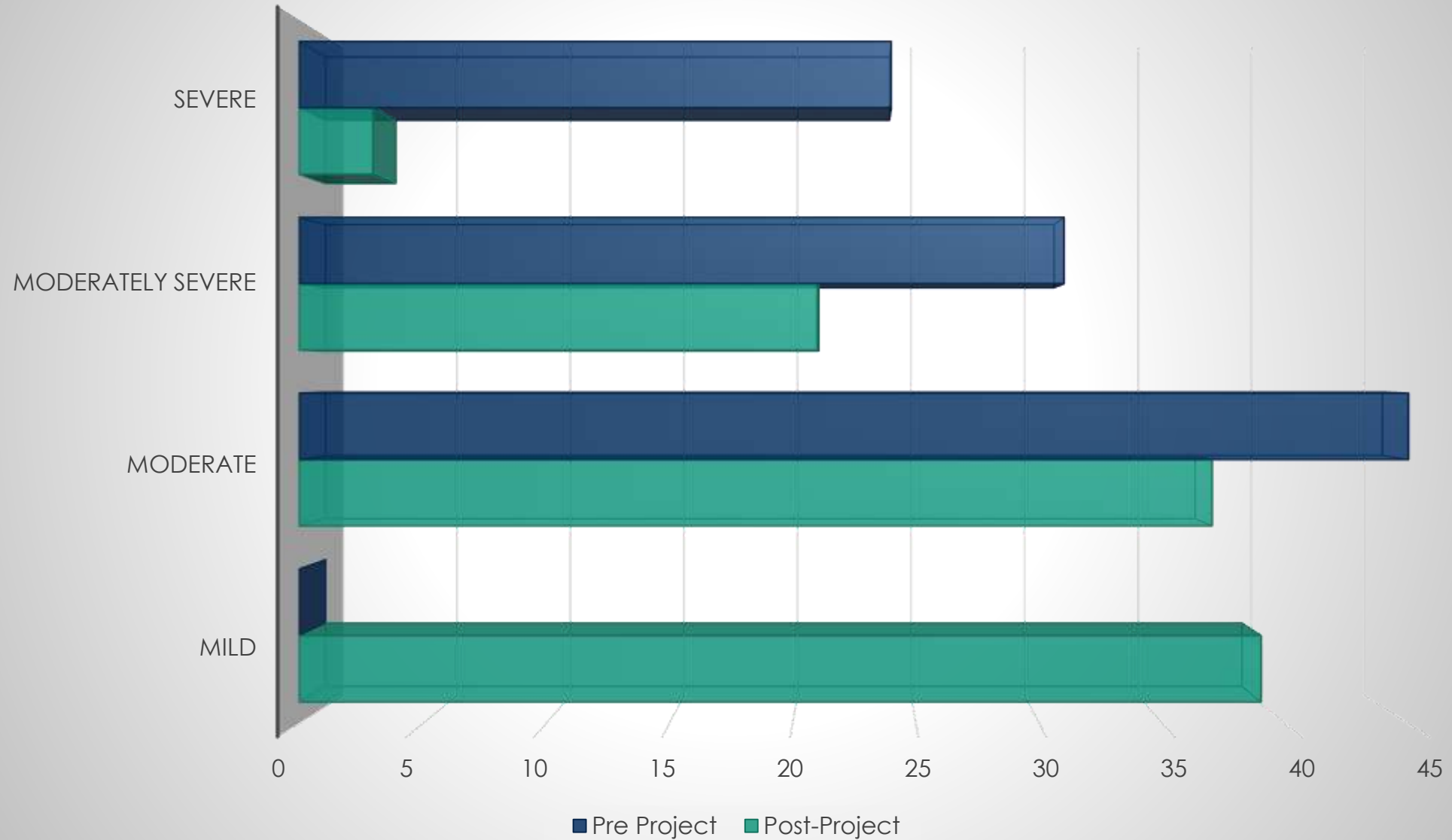
- Reminds us of commonalities
- Promotes 'banter'
- Promotes cohesion
- Provides a collective identity "We are Veterans/Soldiers"
- Fosters mutual respect
- Creates a Peer network

Why is this important?

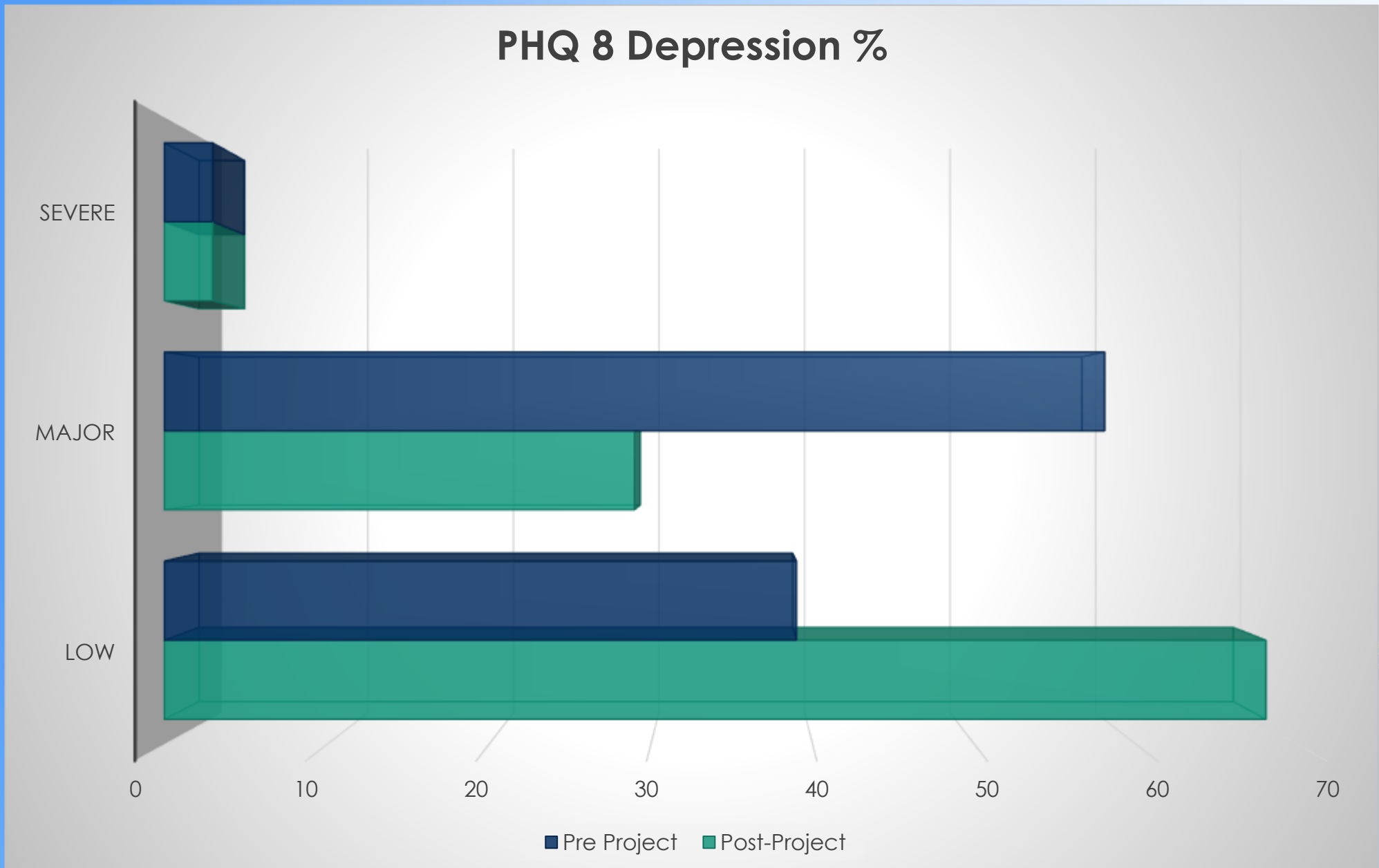
# Reconciliation



## GAD 7 Anxiety %

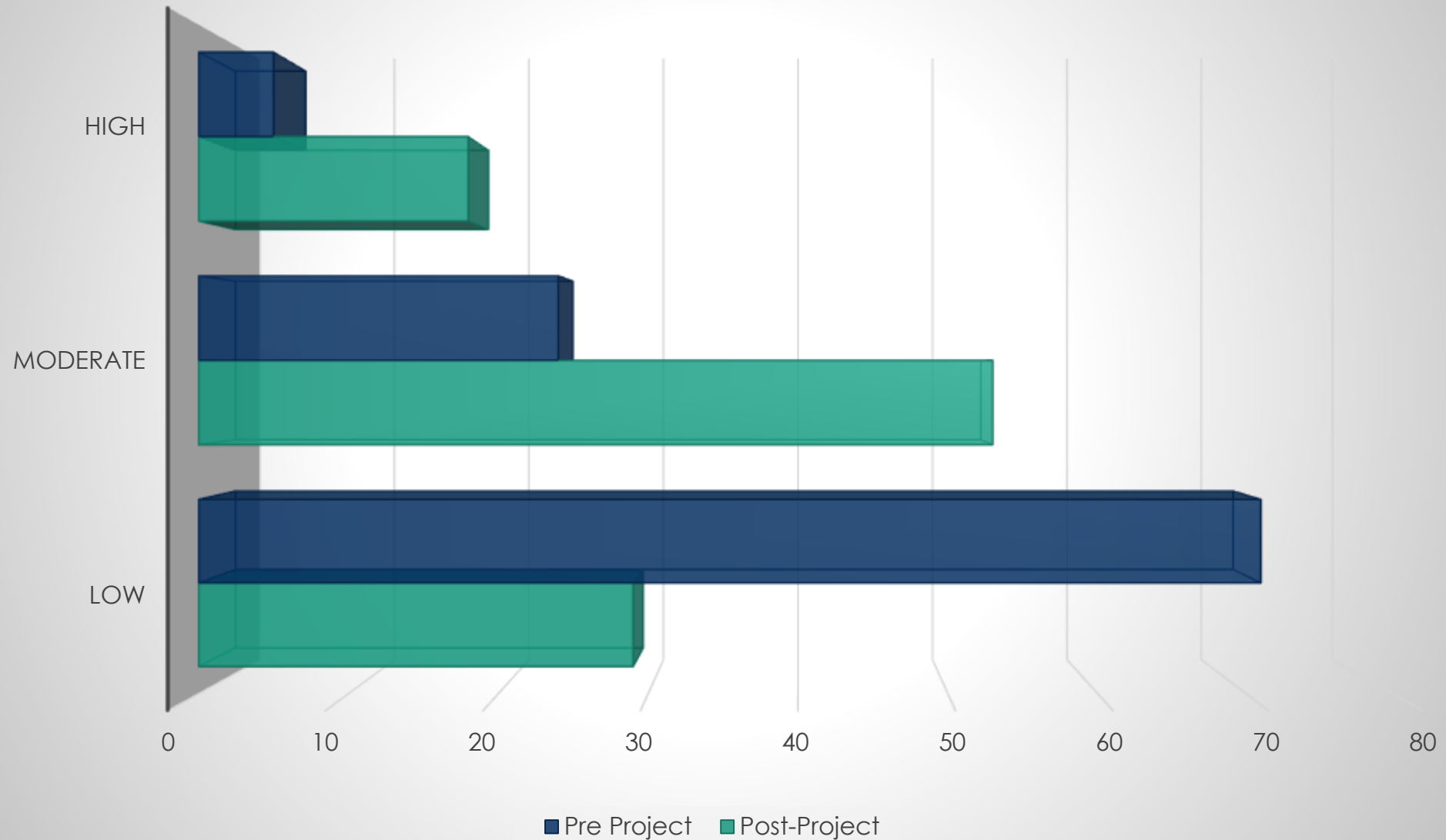






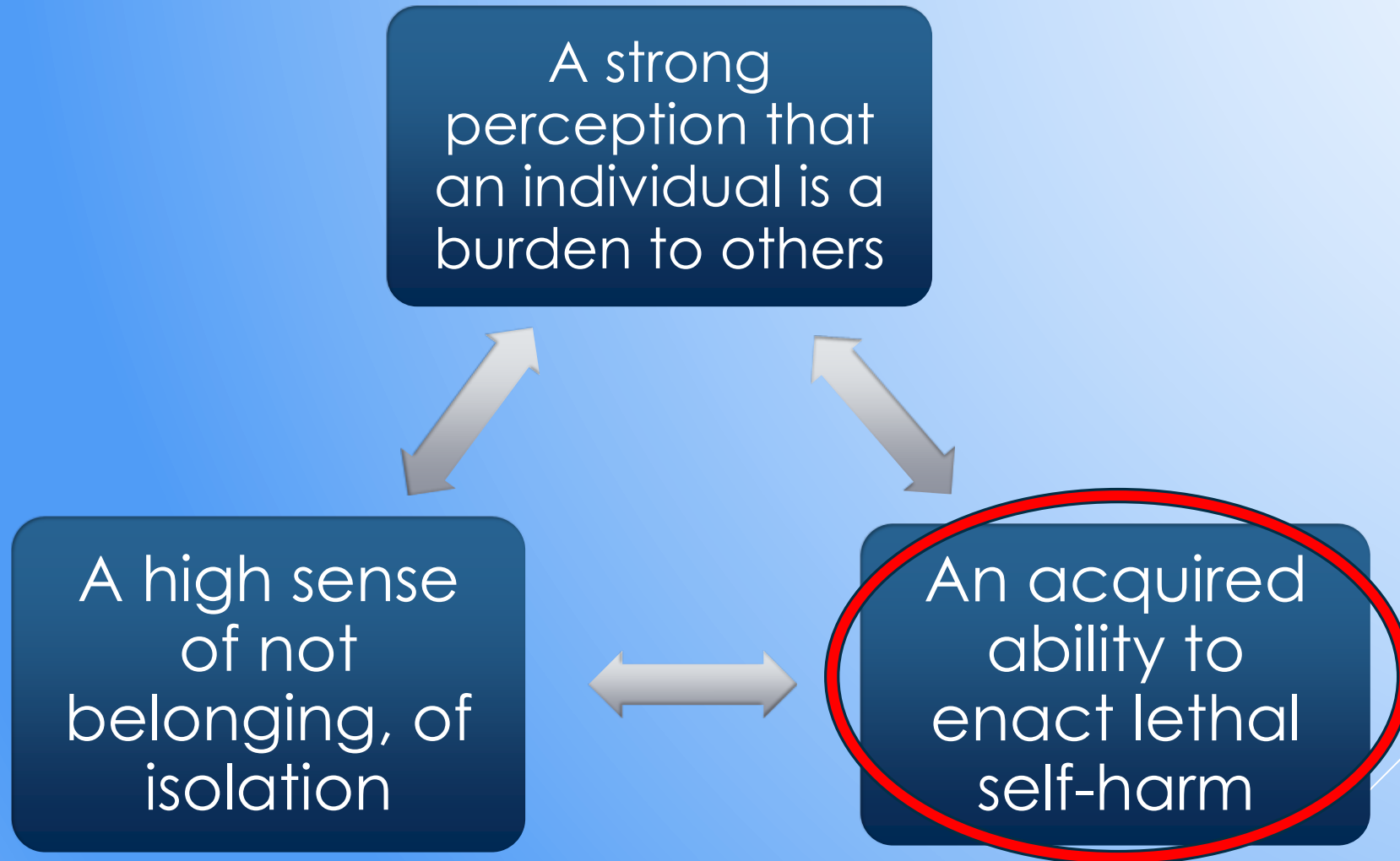


## Warwick-Edinburgh Mental Wellbeing Scale





# THE INTERPERSONAL-PSYCHOLOGICAL THEORY OF SUICIDES IN THE MILITARY COMMUNITY





# WHAT ARE THE MOST COMMON AFFLICTIONS TO BENEFICIARIES



- Intrusive thoughts
- Sleeplessness
- Memory problems
- Anger issues
- Hyper vigilance
- Restlessness
- Nightmares
- Self imposed isolation
- Poor concentration
- Lack of motivation
- Imminent 'Flash to Bang'
- Burdensomeness

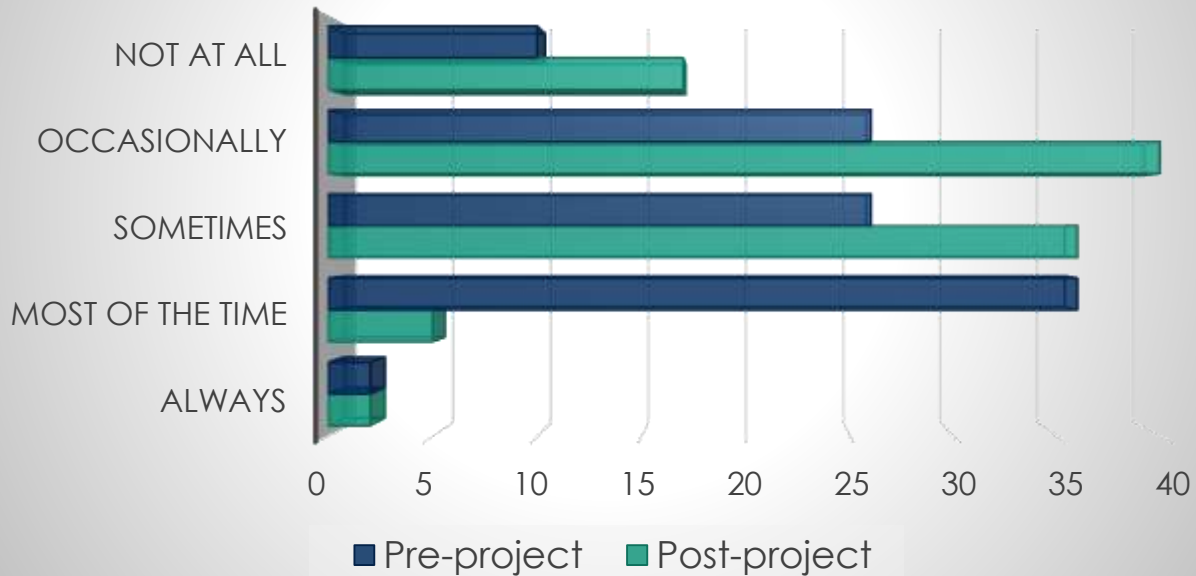


# Project Statistics 2018

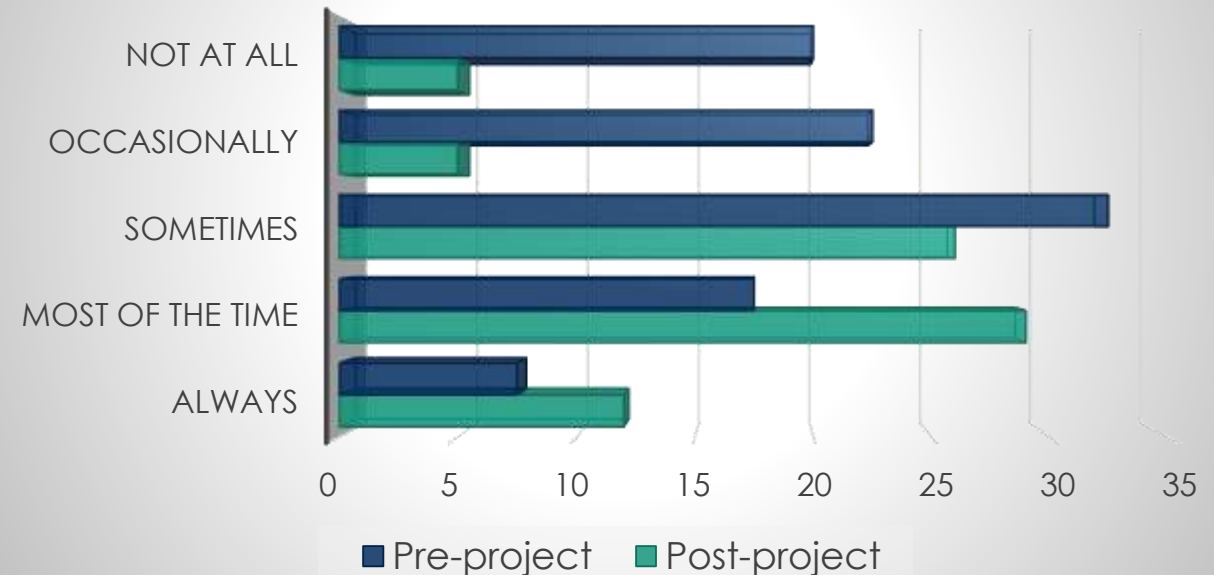
38 Participants providing feedback



## Self Declared Feelings of Isolation %



## Self Declared Feelings of Being Valued %





# HOW DO WE MOVE FORWARD

- The delivery of more heritage based projects that excite and engage participants
- Promote Wellbeing through best practice in archaeology and publicise more what we are doing
- Promote this as a viable and sustainable delivery method
- Get more social prescribing through GP's
- Look to incorporate what we do with the beneficiaries own recovery programme







Digging for Britain BBC4  
Wed 12<sup>th</sup> December 21:00

