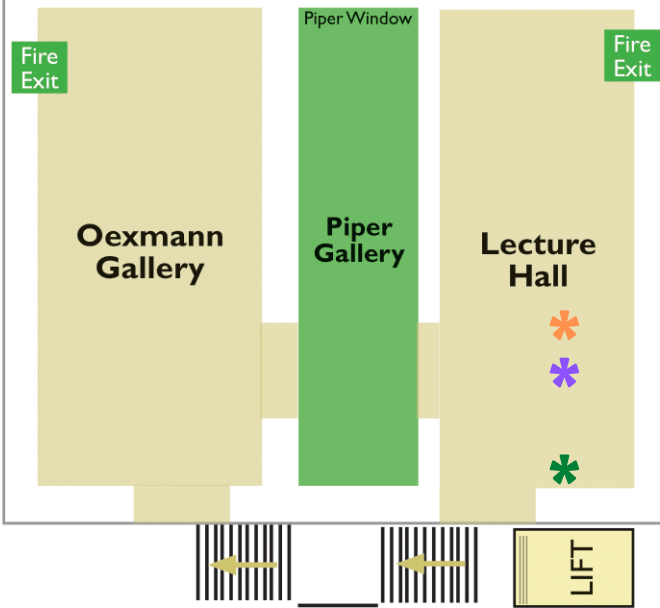


Key to Sensory Map

- * Represents areas where there may be loud noises (Videos/hand-dryers)
- * Represents areas/galleries where the lighting may either be too bright or inconsistent
- * Represents areas where hand sanitiser is available
- * Represents areas where chairs/folding stools are available
- * Represents galleries where the lighting is dimmer than normal
- * Represents the designated 'quiet' area (provided no schools are in)

Sensory Map

Upper Floor A

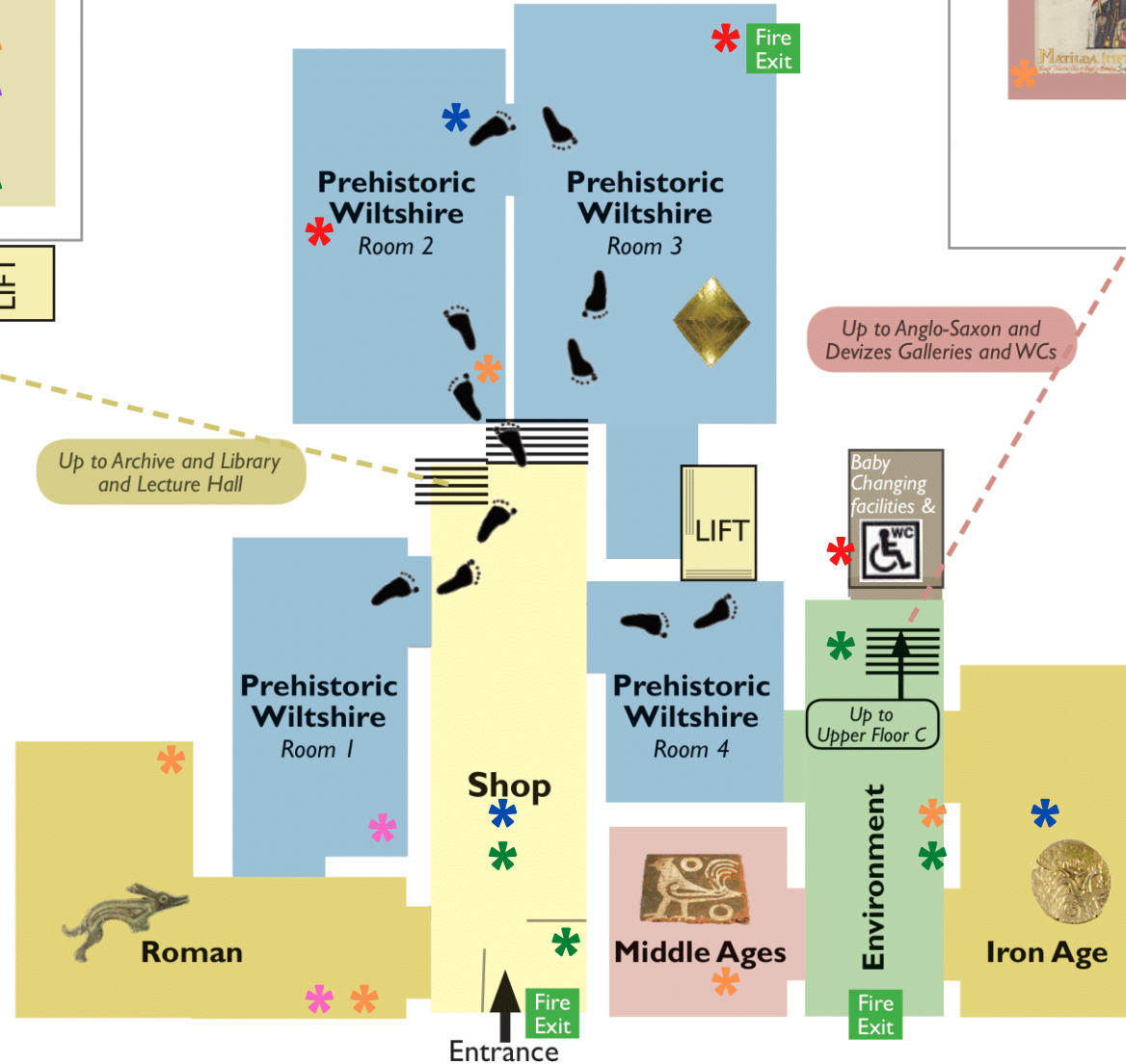
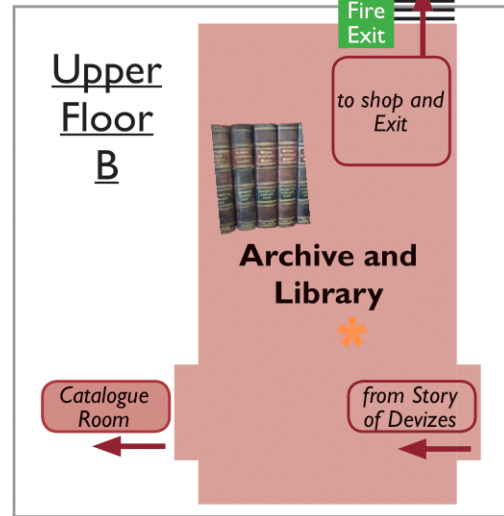
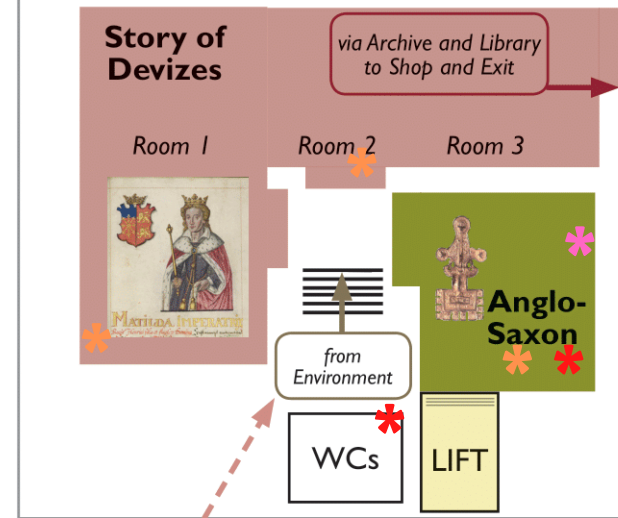


Welcome to Wiltshire Museum and its Archive and Library, occupying two Grade II Listed, early Georgian town houses, a Victorian infill and modern extensions.

There are a number of staircases, rooms and changes in floor level. A lift (see below) is available enabling visitors to view all our galleries.

Enjoy exploring the galleries, buildings and history of Wiltshire.

Upper Floor C



Up to Anglo-Saxon and Devizes Galleries and WCs

Up to Archive and Library and Lecture Hall

Up to Upper Floor C

LIFT

A platform lift enables visitors to access:

- G** = Prehistoric Wiltshire
- UG** = Entrance, Shop and Prehistoric Wiltshire Room 4
- 1** = Lecture Hall, Piper and Oexmann Galleries
- U1** = Anglo Saxon, Story of Devizes, Archive and Library

To operate the lift:
 Hold down the button until a tone and voice indicate the lift has reached your floor. If you release the button, the lift will stop - this is a safety feature.

For wheelchair users we have ramps for use on the small steps on the ground floor.