

About Wiltshire Museum

Organisation background

The Wiltshire Archaeological and Natural History Society (WANHS) was founded in 1853 and owns and operates the Wiltshire Museum, home to the best Bronze Age archaeology collections in Britain. Set in the historic market town of Devizes the Wiltshire Museum is housed in Georgian and Victorian buildings – all Grade II listed.

The collections are Designated as being of national significance, and include many objects excavated in the landscapes surrounding the Avebury and Stonehenge World Heritage Sites, as well as the archives that record their discovery. We have award-winning displays of 500 Stonehenge period objects, including 30 pieces of gold treasure, together with archaeology, art, natural history, local history, and an Archive and Library which is open to visitors.

Wiltshire Archaeological and Natural History Society (the Society) is a Registered Charity and Company Limited by Guarantee. The Society was formed in 1853 to establish a Museum and Library and for the promotion and study of objects connected with Wiltshire.

The Museum is open throughout the year (7 days a week during summer months) for visitors and researchers and in addition to the permanent galleries offers a variety of events, lectures and special exhibitions for all ages. We welcome over 20,000 users each year.

We have:

- 13 paid staff, who work in a variety of roles.
- Almost 1,000 members across the country and around the world.
- Over 100 volunteers who contribute more than 8,000 hours a year, undertaking roles such as welcoming our visitors and helping researchers in our Library and Archive.
- A busy education and community programme - working with schools, local community organisations, families, higher education groups, and many more.
- A Wiltshire Archaeology Field Group, which conducts research, fieldwork and excavation to professional standards.
- An annual archaeological and historical journal, publicising research on activities in the County.
- An important Library and Archive collection.
- Collections which are actively used by a wide range of researchers, including many post-graduates. All our collections are searchable online.

Partnerships

The Museum is part of the Wessex Museums Partnership - a thriving partnership of museums across Dorset and Wiltshire. Comprised of: Dorset Museum, Lydiard House Museum, Poole Museum, STEAM – the Museum of the Great Western Railway, Swindon Museum & Art Gallery, The Salisbury Museum and Wiltshire Museum.

The Partnership is a National Portfolio Organisation, supported by funding from Arts Council England. Much of the work of our partnership programme centres on engaging with underserved communities in our localities.

The development of our 'Assizes for Devizes' project, particularly the activity plan, will be strongly aligned with our partnership programme and its commitment to equality, diversity and inclusion.

We also work with a wide range of other partners, including English Heritage and Salisbury Museum in the Stonehenge Museums Partnership.

Assizes for Devizes: Unlocking Wiltshire's Stories

Wiltshire Museum are working with the Devizes Assize Court Trust (which own the Assize Court) to give the iconic Assize Court buildings, located alongside the Kennet and Avon Canal in Northgate Street, Devizes, a bright future at the heart of the local community.


In June 2023 Wiltshire Museum received initial support from The National Lottery Heritage Fund for an ambitious and exciting project 'Assizes for Devizes: Unlocking Wiltshire's Stories'. Made possible by National Lottery players, the project aims to revitalise the derelict Devizes Assize Court into a vibrant community hub and iconic new home for Wiltshire Museum and its world class collection.


Find out more background on the project by following this link:

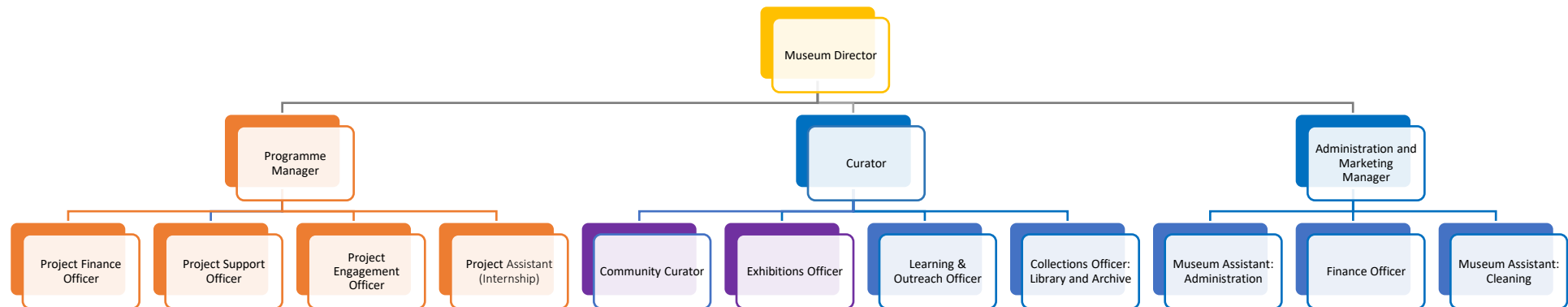
<https://devizesassizecourt.org.uk/our-plans>

Development Phase Staff Structure

 = Wessex Museums funded

 = Museum staff

 = Project staff



 = Wessex Museums funded

 = Museum staff

 = Project staff